



Eastpoint to Carrabelle Through Tate's Hell

Hurricane Michael (2018) destroyed Highway 98 between Eastpoint and Carrabelle. A route through Tate's Hell allowed workers to get back and forth across the county without having to drive to Telogia and back. There are two routes: one if the Carrabelle River bridge is useable, and the other for when the bridge is destroyed. Step by step instructions are beside the map, and distances in miles are marked on the map as well.

How Evacuation Decisions are Made

FCEM recommends an evacuation order if it is needed, and the Board of County Commissioners makes the final decision. Unfortunately, this decision could take place when the weather is beautiful, and the hurricane may decide to go somewhere else.

Evacuations have a very large economic impact on the county, given our dependence on tourists. RV parks, rental properties, restaurants, and many businesses depend on visitors in our county.

The decision to recommend an evacuation is based on the National Weather Service prediction of the likely arrival time of tropical storm or hurricane force wind. It takes 24 hours to evacuate campers, renters, RVs, and low lying areas. Another 24 hours is needed for a county-wide mandatory evacuation.

Unfortunately, 48 hours before the expected arrival of a storm, the storm could hit us, brush by us, or go somewhere else. Storm route prediction can have a high level of uncertainty. Historically, the good news is that numerous storms have come at Franklin County and then veered east or west, with no damage to the county. The bad news is this means that we may have to evacuate the county and then end up enjoying a very pretty day while some other county has to endure a disaster. Our decisions have to consider life safety first.

Evacuation Routes

There are only five ways to get out of Franklin County, all of which involve HWY 98. Starting in the West:

1. HWY 98 goes through Apalachicola and follows the coast to Port St. Joe. From there you can turn north on HWY 71 or continue west to Panama City.

2. HWY 65 starts at HWY 98 a few miles east of Eastpoint and goes north to HWY 20 at Hosford.
3. HWY 67 starts in the center of Carrabelle and also goes north, merging with HWY 65 at Telogia, a few miles south of Hosford.
4. HWY 319 splits off from HWY 98 East of Lanark Village and eventually becomes Capital Circle in Tallahassee.
5. HWY 98 continues east from the 319 split, nears Alligator Point, and then heads north to rejoin HWY 319 in Medart. This is the way out if you are starting at Alligator Point, but otherwise has no advantage over taking HWY 319.

Sheltering from the Storm

All of Franklin County lies in the flood surge zone. Therefore, there are no tropical weather shelters in the county. When you evacuate, you need to leave the county. Scan the QR code for the nearest open shelter locations.



SCAN ME






Special Needs and Transportation Disadvantaged

Special needs shelters are designed to meet the needs of persons who require assistance that exceeds services provided at a general population shelter. These includes people with special medical needs, people whose care exceeds basic first aid, and people with impairments or disabilities who are medically stable and do not require medical care. Citizens who do not have means to travel to a shelter can apply for assistance from the county, to provide Transportation to a nearby shelter. If you or someone you know falls into either of these categories, scan the QR code to apply on the FCEM website.



SCAN ME

Know Your Beach Flags

- | | |
|---|--|
|  Very High Hazard, Prohibited from Entering Water. |  High Hazard, Strong Currents & High Surf |
|  Medium Hazard, Moderate Surf &/or Currents |  Low Hazard, Calm Conditions |
| |  Dangerous Marine Life |

Franklin County beaches are very prone to rip currents. These are strong currents that pull a swimmer out away from the beach. If this happens to you, swim parallel to the beach until you are outside the rip current, and then return to shore. Do not try to swim against a rip current.

Ways to Stay Informed

Franklin County residents are encouraged sign up for Alert Franklin. Alert Franklin is a mass notification system that allows FCEM and the NWS to send alerts and warning messages to your phone, email or both. It allows you to stay informed and can be tailored to fit your need. Scan the QR code to sign up. Other ways to



SCAN ME

stay informed include, listening to WOYS 100.5, WFSU 89.5, following FCEM and NWS on Facebook, and Checking the FCEM website.

Evacuation Check List

1. All lawn chairs and other items that could be thrown by high winds brought inside.
2. Windows covered against flying debris (tape is not useful for this)
3. Delicate items inside home raised above potential flooding.
4. All important papers in waterproof bag and in vehicle.
5. Clothing for four days in vehicle
6. Medications packed in vehicle
7. Pets, four days food, water bowls, medications, and crates packed in vehicle
8. Food and water in vehicle
9. Electronics and chargers in vehicle

Franklin County CERT

CERT is the Community Emergency Response Team, the volunteer division of FCEM. With only three employees, FCEM relies on volunteers for a wide variety of roles during an activation. CERT members are everything from Quartermaster to Chef, Groundskeeper, Inventory Specialist, Documentarian, and Operations Chief. We have roles that fit your interests and life experiences. Come join us!



SCAN ME

Safety in Tate's Hell

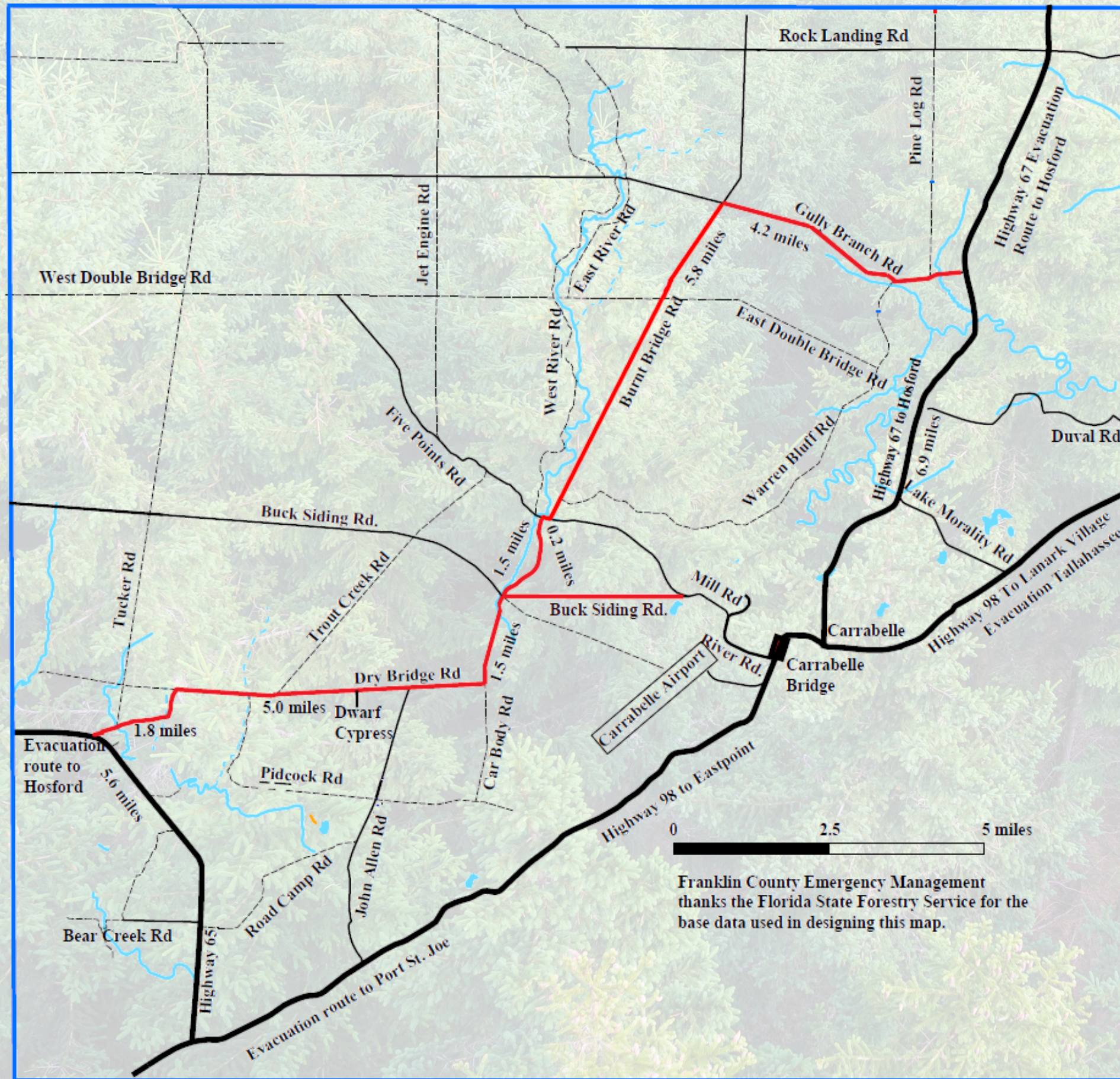
Tate's Hell State Forest is a wonderful resource for both residents and visitors to Franklin County. It is 315 square miles of birds, deer, and bears for us all to enjoy. Unfortunately, people do not go up there with a Plan B for getting home, they get lost, get stuck, and very occasionally die. You need a plan B when you enter Tate's Hell. First, let someone know where you are going and when you plan to return. That gets a search going much faster than someone noticing you didn't come back.

Second, carry the most essential rescue item in your kit, a butane lighter. Starting a small contained fire will help get you rescued. Smoke is easily seen from any aircraft, the smell of smoke is a clue, and fires mean people are present.

Third, protect yourself. Carry water, closed-toe shoes, insect repellent, sunscreen, and a hat. Now you can walk out if necessary. Add a map (available at the Forestry Service office on Airport Road, Carrabelle) and a compass so you know which direction to go. Walking east, west, or south gets you to civilization.

Finally, communicate. Lots of Tate's Hell is outside cell phone coverage, but a satellite communicator, such as made by Garmin and Save Me Spot, will let you call for help anywhere in the world.

Eastpoint to Carrabelle Through Tate's Hell



From Eastpoint to Carrabelle, assuming the Carrabelle Bridge is intact:

- Set odometer at 0.0 at the intersection of 98 and 65.
- Go 5.6 north on 65 to second curve, turn right into Tate's Hell
- Reset odometer to 0.0
- The road turns left.
- At 1.8 turn right at sign to the dwarf cypress boardwalk
- Proceed past the dwarf cypress
- At 6.8 turn left on Car Body Rd
- At 8.3 you are in a five-way intersection.
- Take the second right onto the straight and wide Buck Siding Rd.
- At 11.3 you will merge into Mill Rd
- At 13.3 reach 98 beside the Carrabelle Bridge.

From Eastpoint to Carrabelle, assuming the Carrabelle Bridge has been closed:

- Set your odometer at 0.0 at the intersection of 98 and 65 and proceed north for
- 5.6 miles.
- Reset your odometer to 0.0 and enter Tate's Hell.
- The road turns left. At 1.8 turn right at the dwarf cypress sign.
- Go straight five miles to 6.8 and turn left on Car Body Rd
- At 8.3 go straight across the intersection to a curvy road.
- At 9.8 turn right on Mill road.
- At 10.0 turn left and cross the bridge.
- At 13.9 cross East Double Bridge
- At 15.8 turn right at Gully Branch Rd.
- At 20.0 reach Highway 67; the center of Carrabelle is 6.9 miles

From Carrabelle to Eastpoint, assuming the Carrabelle Bridge is intact:

- Cross the Carrabelle Bridge and immediately turn right on River Road.
- Set your trip odometer to 0.0 here.
- At 1.2 bear left on Mill Road.
- At 2.0 enter Tate's Hell on Buck Siding Rd.
- At 5.0 turn 90 degrees left (second left) onto Car Body Rd.
- At 6.5 turn left on Dry Bridge Rd. Pass John Allen Rd at 7.7
- Pass the Dwarf Cypress Boardwalk entrance at 8.8.
- At 11.5 turn left at a sign to the Dwarf Cypress Boardwalk
- The road turns right at 11.8 and arrives at Highway 65 at 13.3.
- Turn left. Highway 98 is at 18.9 miles.

From Carrabelle to Eastpoint, assuming the Carrabelle Bridge has been closed:

- At the intersection of 98 and Tallahassee St, in Carrabelle
- Set your trip odometer to 0.0. Go north on 67.
- At 6.9 miles turn left into Tate's Hell on Gully Branch Rd.
- Reset your odometer to 0.0.
- At 4.2 miles turn left onto Burnt Bridge Rd.
- At 10.0 miles cross the bridge and turn right on Mill Rd.
- At 10.2 miles (before the bridge) turn left on Car Body Rd.
- At 11.7 go straight across the intersection (sharp left is to Mill Rd)
- At 13.2 turn right on Dry Bridge Rd.
- Pass John Allen Rd at 14.4
- Pass the Dwarf Cypress Boardwalk entrance at 15.5.
- At 18.2 turn left at a sign to the Dwarf Cypress Boardwalk
- The road turns right at 18.7 and arrives at Highway 65 at 20.0.
- Turn left. Highway 98 is at 25.6 miles.