



GRAHAM COUNTY
LAND COMPANY

FRANKLIN COUNTY **FLORIDA**

DISASTER DEBRIS REMOVAL ***& DISPOSAL SERVICES RFP***



Graham County Land Company, LLC

750 Tallulah Road

Robbinsville, NC 28771

(828) 479-3581(Office)

(828) 479-0339 (Fax)

www.GCLNC.com

Primary Contact

John Pressley
(828)735-1094 (C)
John@GCLNC.com

Alternate Contact

Dwayne Cable
(828)735-1225 (C)
(828)346-6115 (O)
Dwayne@GCLNC.com

TABLE OF CONTENTS

TAB A: INTRODUCTION

- ❖ Submittal Letter - Page 4
- ❖ Company Profile - Page 5
- ❖ Key Company Data - Page 6
- ❖ Company Organization Chart - Page 7

TAB B: EXPERIENCE

- ❖ Project Understanding / Demonstrated Experience - Page 9
- ❖ Project Organization & Staffing - Page 10
- ❖ Disaster Event Response Team Organizational Chart - Page 11
- ❖ Proposed Staffing & Resumes - Pages 12 - 16

TAB C: FINANCIALS

- ❖ Audited Financial Statements - Pages - 18 - 41

TAB D: REFERENCES

- ❖ Significant Disaster Events - Page 43
- ❖ Other References & Reference Letters - Pages 44 - 50

TAB E: PROPOSAL MATRIX

- ❖ Management Approach - Pages 52 - 56
- ❖ Technical Approach - Pages 57 - 61
- ❖ Debris Management Site Layout Concept - Page 62
- ❖ Inspection Tower Specifications - Page 63
- ❖ Safety Program - Pages 64 - 68
- ❖ Worksite Security Practices - Page 69
- ❖ Resources - Equipment / Subcontractors - Page 70
- ❖ Subcontractor Plan - Pages 71 - 74

TAB F: LICENSES - Page 76

TAB G: INSURANCE - Page 78

TAB H: REQUIRED DOCUMENTS

- ❖ Proposal Submittal Checklist - Page 80
- ❖ Proposer's Certification - Page 81
- ❖ Addendum Acknowledgement - Page 82
- ❖ Drug Free Workplace - Page 83
- ❖ Public Entity Crimes - Pages 84 - 85
- ❖ Affidavit of Non-Collusion & Non-Interest of Entity's Employees - Page 86
- ❖ Professional References - Page 87
- ❖ MWBE Participation Statement - Page 88
- ❖ Vendor Information - Page 89
- ❖ W-9 - Page 90
- ❖ Unit Cost Fee Rate Schedule - Page 91 - 97

TAB A: INTRODUCTION

July 13, 2021

**Ms. Jessica Gay
FRANKLIN COUNTY
33 Market Street, Suite 203
Apalachicola, FL 32320**

Disaster Debris Removal & Disposal Services RFP

Good afternoon. Having examined the Request for Proposals (RFP) and any clarifications for the above referenced solicitation, we are respectfully submitting the following proposal to provide debris management and removal services in accordance with the RFP requirements. This is a fair proposal developed in good faith, without collusion or fraud and is valid for a minimum of 90 days following bid opening.

Graham County Land Company, LLC (GCL) has been in the debris management business for over 25 years providing services specifically like those being requested in this solicitation. Established in 1972 and organized in the state of North Carolina in 1998, GCL has deep experience working both small and large disaster debris initiatives that are both FEMA and non-FEMA funded. We are highly experienced working with governmental operations of all sizes. During the last seven (7) years, GCL has completed over 300 major debris management projects totaling over \$75,000,000. Most recently, we led and successfully completed multiple concurrent cleanup efforts in Louisiana, Alabama and Oklahoma with debris volumes exceeding 2,500,000 cubic yards over a 23 week period.

Combined, the GCL leadership team has over 200 years disaster recovery debris management experience having led cleanup efforts for some of the largest disaster events in US history over the last 2 decades. GCL has over 145 employees and over 500 pieces of privately owned equipment. GCL has access to substantially more resources through its nationwide agreements with Volvo, Caterpillar and other specialty vendors as well as through our extensive network of high quality and dependable subcontractors. We are a strong company keenly dedicated to protecting the safety and health of our employees, clients and the public.

Without exceptions, GCL accepts all instructions, terms and conditions of this solicitation. Upon acceptance of our offer and provided notice to proceed (NTP), we will promptly undertake to commence and complete delivery and commissioning of all equipment, personnel and related resources as specified in this offer document.

If any additional information is needed, please feel free to contact us at 828-479-3581 (Fax: 828-479-0339) or contact either John Pressley (828.735.1094) or Dwayne Cable (828.346.6115) to further discuss any proposal details. Thank you for your consideration of Graham County Land Company, LLC.

Sincerely,



Randy Jordan, Managing Partner
750 Tallulah Road, Robbinsville, NC 28771

Company Profile: Established in 1972, organized in North Carolina in 1998 and headquartered in Robbinsville, NC, Graham County Land Company, LLC (GCL) provides disaster response, debris management, general contracting, erosion control, land clearing and earthmoving services throughout the United States. Combined, the seven (7) member GCL leadership team has over 200 years experience providing these services with a strong focus in disaster recovery debris management. With over 145 employees and engagement experience in dozens of storm disaster cleanup initiatives over the last two decades, GCL has successfully completed over 300 projects across 20+ states. Most recently, GCL led multiple simultaneous activations for disaster recovery work in Louisiana, Alabama and Oklahoma with debris volumes exceeding 2,500,000 cubic yards over a 23 week period. GCL specializes in fast-paced, rapid response projects and have performed work throughout the United States on a number of Federal level contracts. GCL has over 500 pieces of privately-owned equipment with ready access to substantially more resources through our nationwide agreements with Volvo, Caterpillar and other key vendors as well as through our extensive network of subcontractors. We are highly competent at what we do with the capacity and capability of executing quickly with focused commitment to helping safely achieve client goals.

Services Provided:

Disaster Recovery / Debris Management
Emergency Levee Construction & Removal
Specialty & Biowaste Removal & Disposal
Waterway and Silt Removal

ROW & Private Property Debris Removal
Canal, Lake, & Beach Cleanup/Restorations
Temporary Housing Sites
Asbestos Abatement / RACM

Sample Disaster-Related Projects

Hurricane Laura Cleanup - Louisiana - 2020

Multiple Concurrent Activations: Beauregard Parish (1,501,378cy), City of DeRidder (357,537cy), Jackson Parish (51,118cy) Sulphur Parks (63,772cy), City of Carencro (86,134cy), Town of Duson (5,850cy), Lafourche Parish Public School District (1,590cy) - \$13,321,066

Santa Barbara County, California – Emergency Debris Removal – USACE – 2018

Serving as subcontractor by TFR Enterprises, GCL was responsible for removing and disposing of 172,408 cubic yards of debris resulting from flooding in January 2018 throughout Santa Barbara County. Debris included trees, mud, sediment, rocks of all sizes and other debris – \$9,447,518

Military Ocean Terminal Sunny Point, USACE, Brunswick County, NC 2019

Repairs of five damaged infrastructure resulting from Hurricane Florence Flooding. Repairs included replacement of damaged fire protection lines, repairs of damaged embankments, road repairs containing asbestos water pipe and guardrail replacements. \$3,833,725

Paradise California Wildfires Cleanup - 9/2018 – 3/2019

Serving as subcontractor to Mowbray's Tree Service (San Bernardino, CA), GCL assisted in cutting and removing approximately 2,200 hazardous and damaged trees located throughout steep mountainside terrain under wet and windy conditions. (294,347 CY - \$7,959,151)

Henderson County, NC - Hwy 9 Emergency Slide - 2018

Removed 162,458 cubic yards of materials blocking NC Highway 9 and stabilized the mountainside. \$1,519,886



Hurricane Matthew – Disaster Debris Removal, Brevard County and Amelia Island, FL – 2016

GCL was contracted by multiple companies for the recovery mission following Hurricane Matthew in Florida. Work included removing 535,835cy of ROW Debris, Debris Reduction, Stump Removal, TDSR Management and final much disposal - \$1,271,776

Key Personnel & Company Data

NAME	TITLE	PHONE NUMBER	EMAIL
Randy Jordan	Managing Partner	828-735-2581	Randy@GCLNC.com
Cecil Patterson	Executive VP/Partner	865-771-9686	Cecil@GCLNC.com
John Pressley	VP/Partner	828-735-1094	John@GCLNC.com
Storm Jordan	VP Operations	770-373-8955	Storm@GCLNC.com
Julie Hancock	VP Finance	828-735-0549	Julie@GCLNC.com
Jeff Hancock	VP Facilities	828-361-3858	Jeff@GCLNC.com
Dusty Orr	VP Safety	828-735-0119	Dusty@GCLNC.com
Dwayne Cable	VP Program Management	828-346-6115	Dwayne@GCLNC.com

HEADQUARTERS:

Graham County Land Company, LLC
750 Tallulah Road
Robbinsville, NC 28771
(828) 479-3581 – Office
(828) 479-0339 – Fax
www.GCLNC.com

ESTABLISHED/ORGANIZED: 1972/1998 (NC – 73706)

EMPLOYEES: 147 (February 2021)

FEIN: 56-2089131

EVERIFY: 709602 (Since 9/19/2013)

CAGE CODE: 6WW66

DUNS: 078849632

HUBZone: 54662 – (01/28/2016 – recertified thru 07/31/2022)

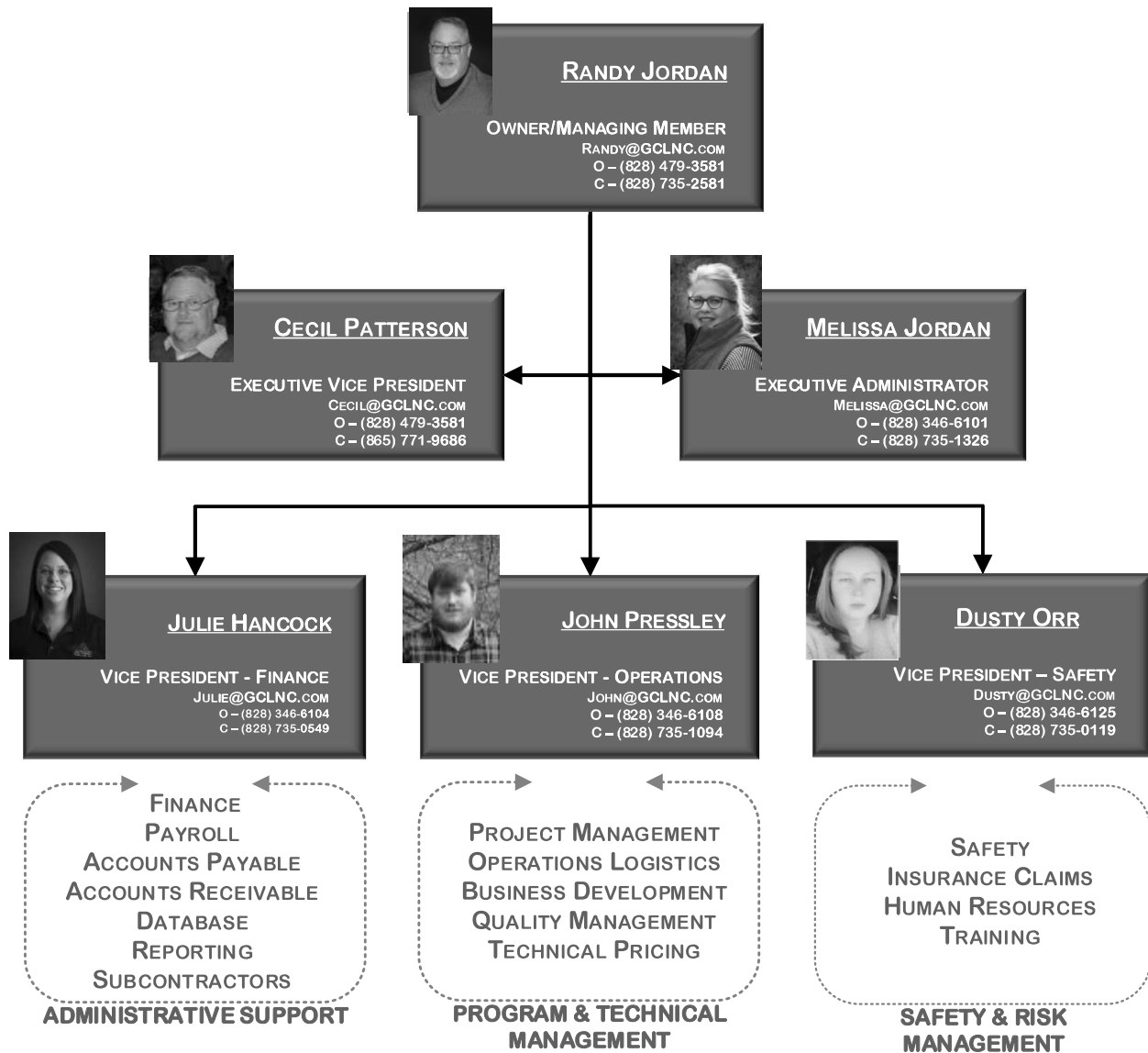
SURETY: Florida Surety Bonds, Inc.
620 N. Wymore Rd, Suite 200
Maitland, FL 32751
Emily Golecki - (407)786-7770
(Emily@Floridasuretybonds.com)

INSURANCE: HUB International Carolinas
40 E. Alamar Avenue
Santa Barbara, CA 93105
Nicole Long, Account Manager
Nicole.Long@hubinternational.com
(805) 618-3703 - Office
(818) 301-3295 - Fax

BANKING: United Community Bank
132 Rodney Orr Bypass
Robbinsville, NC 28771
Pam Shaffer, Vice President
(828) 479-3037

STATES LICENSED:

Alabama (50416), Arkansas (0339150519), California (1038986), Colorado (20141398385), Florida (CUC1225197), Georgia (GCCO004190), Louisiana (60192), Mississippi (20999-MC), Nevada (NV20171572281), New Mexico (4922727), North Carolina (73706), North Dakota (0003065860), Ohio (2281227), Oregon (152093499), Pennsylvania (4291491), South Carolina (G118526), Tennessee (000733186), Texas (32054618916), Virginia (2705153295), and West Virginia (332180).



ORGANIZATION CHART MAY 2021

(145 PROFESSIONALS)

TAB B: EXPERIENCE

PROJECT UNDERSTANDING / DEMONSTRATED EXPERIENCE

Graham County Land Company (GCL) understands the scope of work associated with providing comprehensive disaster debris management services following FEMA Debris Management Guide program standards. For over 3 decades, GCL leadership has worked with federal, state and local agency operations as well as with client contractors to quickly and safely process millions of cubic yards of debris following storm events of varying sizes. From extensive land clearing and post fire cleanup of thousands of acres to emergency removal of major mud slides and flood damage clearance, GCL has the experience and resources to bring damaged areas back to near normalcy quickly, safely and efficiently.

To best overview our company's experience and capabilities in managing multiple disaster debris management projects covering a wide area with both large and small debris volumes, the following is an overview of recent initiatives involving seven (7) activations resulting from Hurricanes Laura, Delta, and Zeta as well as activations of two (2) severe tropical and ice storms impacting clients in Louisiana, Alabama and Oklahoma from September 2020 through February 2021. The following is an overview of these nine (9) activations and concurrently running debris removal initiatives during this period.

In Week 1 (Sept 2020), there were two concurrent Louisiana activations involving Beauregard Parish (LA) and the City of DeRidder (LA) ultimately resulting in 1,501,378 cubic yards (CY) and 357,573CY of debris respectively over the next 90+ days. GCL was on-site at both locations within 24 hours and successfully moved over 32,000CY of material the first week. At times, over 300 trucks were in operation. Haul volumes exceeded 89,000CY, 165,000CY and 159,000CY of material of the following 3 weeks at just these two locations. In Week 4, three (3) additional activations took place at Sulphur Parks (LA), Jackson Parish (LA) and in the City of Saraland (AL). Weekly haul volumes exceeded 240,000CY of material across those five (5) activations engaging over 500 trucks. Over the ensuing weeks, we had four (4) additional activations with the City of Carencro (LA), Oklahoma City (OK), the Town of Duson (LA) and with Lafourche Parish School District (LA). Weekly haul volumes were routinely between 150,000CY - 250,000CY across all nine activations. Collectively, total haul volumes exceeded 2,200,000CY through February 2021. Most all work across all 9 activations were either completed or near complete within 90 days or less of activation with exception of Beauregard Parish (LA) and the City of DeRidder (LA) which were extended due to extensive debris volumes and schedule delays caused by additional storms. Two activations were completed within 2 weeks.

GCL worked closely with all clients to provide timely and accurate reporting to help facilitate FEMA reimbursements in a timely manner. Weekly cashflow requirements just on these activations exceeded \$500,000 with some weeks exceeding \$1.0 million. Accordingly, it was critical that all data collection and reporting happened promptly and efficiently as GCL made sure its subcontractors were promptly and accurately paid within contract requirements. With payment cycles from clients at 30+ days, GCL had to have sufficient cash and loan capacities to carry 5 - 6 weeks of financial requirements needed for subcontractors and other expenses while waiting on client funding to be received. Some work delays were mandated by the client due to additional storms and extensive rains taking place while work was in progress. One client, Jackson Parish, carried the expenses of multiple smaller local governmental communities in the area and requested GCL to provide debris clearance and track haul volumes separately to support their future billing back to those communities which we did.

The above projects were not GCL's only projects underway at the time of these activations. Although disaster debris removal initiatives remain the highest priority, other work was either temporarily delayed or continued at a slower mutually agreed upon pace. Suffice to say, GCL understands what it takes to address the debris removal needs of multiple concurrent clients across a wide multi-state area and has the resources to make it happen. Regardless of the size of the project, we can get it done. Quickly, Safely and Efficiently!

Project Organization & Staffing

Because every disaster emergency event is unique on many levels, it is important to select an organization and staffing team with the broadest experience in organizing and managing such events. Graham County Land Company (GCL) has a leadership team with decades of experience organizing and managing both small and large events with direct experience organizing, leading and managing execution of FEMA supported disaster-related events up to and including major events such as the hurricanes that have impacted Montana, Alabama, Florida, and North Carolina over the last decade. With these events also comes extensive flood-related damages to infrastructure impacting road, bridges and other critical community services and operations. Also included within this proposal are references working with similar community operations providing debris removal needs like those being requested by this RFP.

Key project personnel have been identified based on their past performances organizing, leading and managing the execution of disaster clean-up efforts of all sizes working closely with local, state, and federal organizations helping bring communities back to degrees of normalcy within a reasonably prompt period of time. Their resumes are included in the following pages of this proposal summarizing their experience, qualifications and areas of expertise supporting all aspects of hazardous debris cleanup efforts. With these resumes, we propose what lead functions each would be responsible for depending upon the requirements of the emergency event.

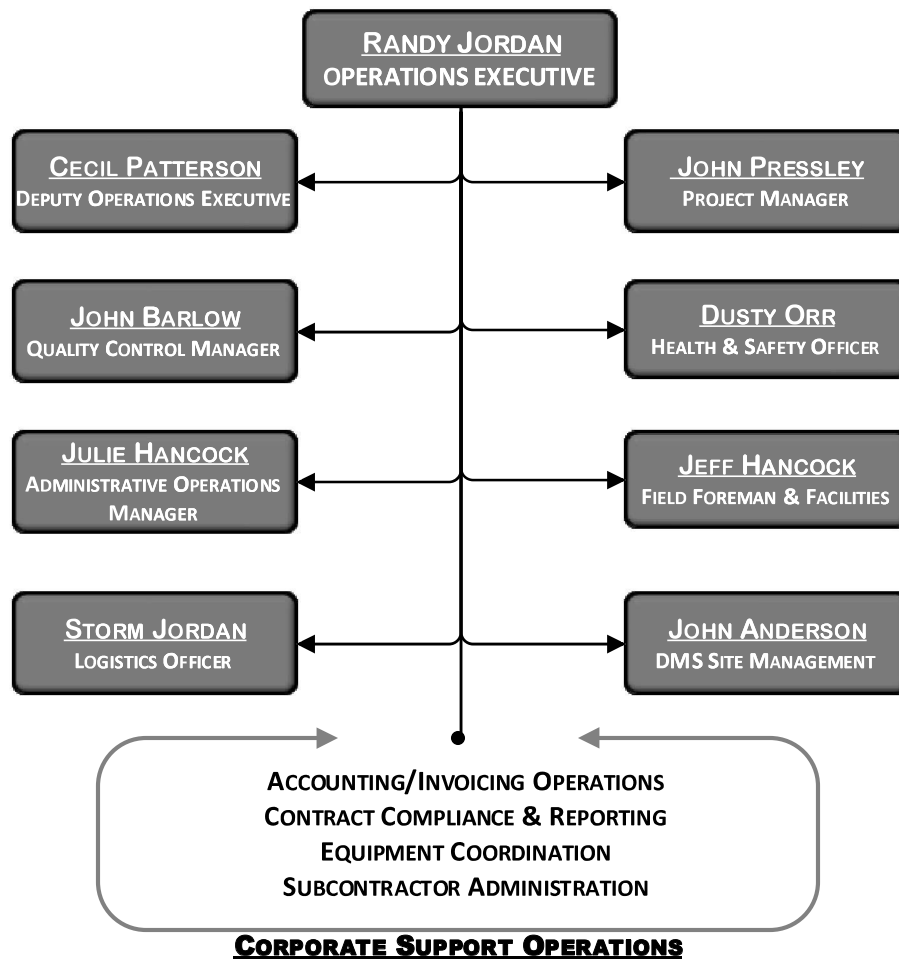
Invoice Processing

Graham County Land Company, LLC submits invoices to customers based upon the local, state and government requirements. Invoices will be prepared based upon approved tickets and will be submitted to the City on a monthly basis, unless otherwise instructed. All invoices for debris removal would include a listing of the approved tickets. All hourly work would be invoiced based upon approved hours. The invoices for hourly work would include a listing of the time for equipment and employees. A sample of GCL's invoice has been included within the financial section of this proposal.

Federal Emergency Management Agency

The employees of GCL are well versed in all aspects of FEMA documentation, project management, and payment processes. With over 20 years experience, our disaster response team has substantial knowledge and experience working closely with local, state, and federal agencies on a wide variety of FEMA related events. The resumes and references included in our proposal to you are examples of our experience working within the rules, guideline, regulations and processes required by FEMA. GCL will make it a priority to provide the County with all the necessary compliance and documentation to support full reimbursement for all eligible costs from FEMA.

DISASTER EVENT RESPONSE TEAM
ORGANIZATIONAL STRUCTURE



Operations Executive

Randy Jordan - Owner/Managing Member - January 1999 to Present



Mr. Jordan has been the CEO/Managing Member of Graham County Land Company, LLC since 1998. Being employed in the construction industry since 1987, Mr. Jordan has extensive nationwide experience with construction and disaster recovery projects. In 2013, Mr. Jordan left P&J and began restructuring the Graham County Land Company brand as a small business entity focusing on disaster response and debris management, land clearing and earthmoving, erosion control, and general contracting. Mr. Jordan has managed over \$1 billion worth of projects.

Experience:

Graham County Land Company, LLC - CEO/Managing Member - 1998 to Present

Management of land holdings. In May 2013, expanded the company to include a construction division which includes Heavy Civil, Land Clearing, & Disaster Recovery throughout the United States. Mr. Jordan manages all operations for GCL.

Phillips and Jordan, Inc. 1989 to 2013

Executive Vice President & Chief Operating Officer - 2011 to 2013: *Leadership of all operations company-wide for multiple types of Heavy Civil, Land Clearing, & Disaster Recovery projects.*

Senior Vice President - 2005 to 2011: In addition to all North Carolina operations, provided leadership of nationwide Heavy Civil, Land Clearing, and Disaster Recovery projects.

Vice President of North Carolina Operations - 1994 - 2004: *Leadership of multiple Heavy Civil, Land Clearing, & Disaster Recovery projects for North Carolina.*

Notable Projects:

- USACE - Hurricane Katrina Cleanup - New Orleans, LA
- Alabama State Port Authority - Choctaw Point Terminal Land Reclamation/Stabilization
- Linville Land Harbor Property Owners Association - Dam Rehabilitation - Linville, NC
- USACE - 2011 Alabama Tornado Recovery, Various Locations, AL
- DeKalb County, GA - Seminole Road Landfill Phase 2A Closure - Dekalb Co., GA
- USACE - Joplin Tornado Cleanup - Joplin, MO
- Duke Energy Carolinas - Catawba Dam ESSI Phase II - Nebo, NC
- USACE - Levee Removal Resulting From Flooding 2011 - Minot, ND
- Miller Environmental - BP Deepwater Horizon Oil Spill 2010 - Pascagoula, MS
- USACE - C44 Reservoir Intake Canal/Project Access Road - Stuart, FL
- NCDOT - I-40 Rock Slide Repair - Maggie Valley, NC
- NCDOT - Clay County US 64 Reconstruction - Clay County, NC
- USACE - Hurricane Ivan Cleanup 2004 - Mobile, AL
- USACE - Hurricane Dennis Cleanup 2005 - Mobile, AL
- Easley Combined Utilities - Saluda Lake Restoration - Easley, SC
- Hempstead County, AR - Ice Storm Cleanup 2000 - Hope, AK
- McIntosh County, OK - Ice Storm Cleanup 2000 - Eufaula, OK
- USACE - Flood Repairs 2001 - Beckley WV
- TVA - Cumberland-Montgomery 500kV Transmission Lines - TN
- USACE - Debris Processing Sept 11, 2001 Attack on the World Trade Center- NY
- USACE - Ice Storm Cleanup 2002 - Oklahoma City, OK
- Palm Beach Aggregates - North & South Water Storage Areas for the L-8 Reservoir, FL

Deputy Operations Executive

Cecil Patterson - Executive Vice President/Partner - January 2014 to Present



Mr. Patterson joined Graham County Land Company, LLC (GCL) in January 2014, having previously worked with Randy Jordan and John Pressley (owners of Graham County Land) at Phillips and Jordan, Inc. Mr. Patterson has been involved in the construction industry for over 45 years serving in a wide variety of roles including project manager, division manager, vice president, and corporate counsel. Mr. Patterson has been directly responsible for leading and managing hundreds of projects in the areas of pipeline clearing, heavy civil, and disaster response.

Experience:

Graham County Land Company, LLC - 2014 - Present

Phillips and Jordan, Inc. - 1993 to 2014

Vice President - 2009 - 2014 / Assistant Vice President - 2005 - 2009 - Nationwide leadership & management of the Pipeline Division from business development through service delivery. Co-leader of Disaster Recovery Division, including business development, post-event contracts, & project execution.

Division Manager - 1996 - 2005 - Leadership of Heavy Civil, Land Clearing, & Disaster recovery projects.

Corporate Counsel - 1993 - 1996 - Reviewing & negotiating all contracts, insurance & bonding, and all related legal matters including OSHA, workers comp & case management, safety, HR, risk management & real estate.

Notable Project Leadership:

- USACE - Hurricane Katrina Cleanup - New Orleans, LA
- USACE - Hurricane Katrina - Sector IV - Western LA
- Alabama State Port Authority - Choctaw Point Terminal Land Reclamation/Stabilization - AL
- USACE - 2011 Alabama Tornado Recovery - Various Locations, AL
- USACE - Joplin Tornado Cleanup - Joplin, MO
- USACE - Levee Removal Resulting From Flooding 2011 - Minot, ND
- Miller Environmental - BP Deepwater Horizon Oil Spill 2010 - Pascagoula, MS
- NCDOT - I-40 Rock Slide Repair - Maggie Valley, NC
- USACE - Hurricane Ivan Cleanup 2004 - Mobile, AL
- USACE - Hurricane Dennis Cleanup 2005 - Mobile, AL
- Hempstead County, AR - Ice Storm Cleanup 2000 - Hope, AK
- McIntosh County, OK - Ice Storm Cleanup 2000 - Eufaula, OK
- USACE - Flood Repairs 2001 - Beckley, WV
- TVA - Cumberland Montgomery 500kV Transmission Lines, TN
- USACE - Debris Processing September 11, 2001 Attack on the World Trade Center - NY
- Ice Storm Cleanup 2002 - Oklahoma City, OK

Awards received:

- Carolina Pinnacle Award in 2011 for the Best Highway/Heavy Project
- American Public Works Association Project of the Year Award 2005 for Disaster and Emergency Construction.
- Hurricane Isabel Debris Removal Project - Repair for the City of Virginia Beach.
- Numerous letters of recognition from various state and government entities
- USACE Contractor of the Year
- Award for work completed for the processes of debris from the World Trade Center Attack

Project / Quality Control Manager

John Pressley - Senior Vice President, Operations - 2013 to Present



Mr. Pressley joined Graham County Land Company, LLC in 2013, having previously worked with Randy Jordan and Cecil Patterson (now owners of Graham County Land) at Phillips and Jordan, Inc. Mr. Pressley has been active in the construction industry since 2004 and has been involved with management of many notable projects. Mr. Pressley has been directly responsible for managing numerous projects in the areas of clearing, heavy civil, DOT highway construction and disaster response.

Notable projects managed during tenure:

- *USACE – Hurricane Katrina Cleanup – New Orleans, LA*
- *USACE – 2011 Alabama Tornado Recovery, Various Locations, AL*
- *Hurricane Sandy 2012 – Suffolk County, NY*
- *Hurricane Isaac 2012 – City of Westwego, LA*
- *Debris Removal & Disposal of 10,000 Cubic Yards Public Right of Way, LA*
- *Hurricane Irene 2011 – Virginia Department of Transportation – VA*
- *Hurricane Ike 2008 – City of Nacogdoches, TX*
- *Debris Removal & Disposal of 20,000 Cubic Yards City Limits of Nacogdoches, TX.*
- *Kentucky Ice Storm 2009 – City of Paducah, KY*
- *Oklahoma Ice Storm 2007 – Muskogee, OK*
- *Western New York Ice Storm 2007 – Buffalo NY & Lackawanna, NY*

Certificates & Licenses:

- *American Heart Association – First Aid CPR*
- *Fortier Loss Control Consultants - 24 Hour HAZWOPER Certification*
- *NCDCA & CS Pesticide Applicator Certification – Right of Way Category*
- *NCDOT Level II: Certified Erosion and Sediment Control/Storm water Site Manager*
- *Emergency Management Institute – FEMA IS-00100, 00200, 00700, 00800 Certifications*
- *USACE – Construction Quality Management for Contractors Certificate*
- *FEMA 325 Guide and Safety Training Certificate*
- *EPA/AHERA – Asbestos Contractor/Supervisor & Inspector Certificates*
- *Louisiana Department of Environmental Quality – Accredited Asbestos Supervisor*
- *Electrical Hazard Awareness / Tree Worker Safety Training Certificate*
- *Emergency Response Aerial Rescue, Tree and Aerial Lift Safety Training Certificate*
- *Chainsaw Safety and Cutting Techniques Safety Training Certificate*
- *OSHA Logging Standards Training Certificate*
- *North Carolina Department of Transportation, Escort Vehicle Operator Certificate*
- *Eastern Technical Associates of Raleigh – Visible Emission Evaluation Certificate*
- *ESI International – Federal Contracting Basics Certificate*
- *The George Washington University, School of Business – Federal Contracting Basics Certificate*
- *ESI International – Operating Practices in Contract Administration Certificate*
- *The George Washington University, School of Business – Operating Practices in Contract Administration Certificate*
- *George Washington University, Law School – Construction Contracting Certificate*
- *George Washington University, School of Business – Associates Certificate in Project Management*

Administrative Operations Manager

Julie Hancock - Senior Vice President of Finance - 2013 to Present



Mrs. Hancock has been employed in the construction industry since 1999 and has been involved with the administration of various projects including the Joplin, MO tornado cleanup, Levee removal in Minot, ND, and the I-40 Rock slide in Maggie Valley, NC to name a few. Ms. Hancock has overall responsibility for company-wide finance matters.

Experience:

Graham County Land Company, LLC.

Senior Vice President, Finance - 2017 to Present

Vice President, Finance - 2013 to 2017

Phillips and Jordan, Inc. - 1989 to 2013

Contract Administrator - 2008 to 2013

Responsibilities included review of contract and bid documents to assess risk, set up projects, order certificates of insurance, obtain project bonding, pay all company bills, invoice customers, accounts receivables follow up and coordinate IT support services on accounts receivables.

Projects included:

- Joplin Tornado Cleanup - USACE - 2011
- Levee Removal - Monot, ND - USACE - 2011
- North Dakota Oil Field (various customers) - 2011 - 2013
- I-40 Rock Slide Repair - Maggie Valley, NC (NCDOT - 2009)
- US 64 Reconstructuon - Clay County, NC (NCDOT - 2010)

Office Manager - 2003 - 2008

Accounts Payable, Accounts Receivable and Payroll for two rock quarries and a concrete plant. IT support for the Robbinsville office and field staff as well as the two rock quarries and concrete plant.

Disaster Recovery Administrative Coordinator - 2000 - 2003

- Ice Storm cleanup in Hope, Arkansas (USACE - 2000)
- Ice storm cleanup in Eufaula, Oklahoma (USACE - 2000)
- Flooding repairs in Beckley, West Virginia (USACE - 2001)
- Processing of debris from the World Trade Center attack, New York (USACE - 2001)
- Ice storm cleanup in Oklahoma City, Oklahoma (USACE - 2002)
- Turkey Incineration in Shenandoah Valley, Virginia Dept of Environmental Quality - 2003

Front Desk Clerk - 1998 to 2000

Administrative assistant for a wide variety of task. Processed payroll. Phone operator. IT support for the Robbinsville, NC office and field staff.

Field Foreman & Facilities

Jeff Hancock – Vice President - 2013 to Present



Mr. Hancock has been employed in the construction industry since 1986 and has been involved with management of many notable projects. Responsibilities have included oversight of the construction division involving various types of Heavy Civil, Land Clearing, and Disaster Recovery Projects throughout the United States.

Notable Projects:

- BP Deep Horizon Gulf Oil Spill, Pascagoula, MS (BP - 2010)
- Buncombe County Ice Storm debris removal (NCDOT - 2010)
- Emergency Road Slide, Cocke County, TN (TDOT - 2011)
- Tornado cleanup in Alabama (USACE - 2011)
- Tornado cleanup in Joplin, Missouri (USACE - 2011)
- Levee removal in Minot, North Dakota as a result of flooding (USACE - 2011)
- North Dakota Oil Field (Various Customers - 2011 to 2013)
- Emergency Road Slide Hwy 441, Cherokee, NC (NCDOT - 2013)
- Debris removal resulting from the Blizzard of 1993, Cherokee County, NC (NCDOT - 1993)
- Hurricane Hugo Debris Removal, Charlotte, NC (NCDOT - 1989)

Past Positions:

Sales Manager – 2005 to 2008

Sales Manager for two rock quarries and a concrete plant.

NCDOT Inspector/Supervisor – 1995 to 2005

Manage NCDOT projects including subcontractors on the projects. Inspect subcontractor performed items on NCDOT projects. Member of the Hazardous Material Response Team.

NCDOT Crew Leader – 1986 to 1995

Management of crews on road projects, maintenance projects, and disaster debris removal projects.

TAB C: FINANCIALS

CONFIDENTIAL



GRAHAM COUNTY LAND COMPANY, LLC

AND SUBSIDIARY

CONSOLIDATED FINANCIAL STATEMENTS AND
INDEPENDENT AUDITOR'S REPORT
DECEMBER 31, 2019

ROBBINSVILLE, NC

DLC CPAs

Certified Public Accountants



INDEPENDENT AUDITOR'S REPORT

To the Board of Directors
Graham County Land Company, LLC

We have audited the accompanying consolidated financial statements of Graham County Land Company, LLC (a North Carolina limited liability company) and its subsidiary, which comprise the consolidated balance sheet as of December 31, 2019, and the related consolidated statement of income, changes in member's equity, and cash flows for the year then ended, and the related notes to the consolidated financial statements.

Management's Responsibility for the Financial Statements

Management is responsible for the preparation and fair presentation of these consolidated financial statements in accordance with accounting principles generally accepted in the United States of America; this includes the design, implementation, and maintenance of internal control relevant to the preparation and fair presentation of consolidated financial statements that are free from material misstatement, whether due to fraud or error.

Auditor's Responsibility

Our responsibility is to express an opinion on these consolidated financial statements based on our audit. We conducted our audit in accordance with auditing standards generally accepted in the United States of America. Those standards require that we plan and perform the audit to obtain reasonable assurance about whether the consolidated financial statements are free from material misstatement.

An audit involves performing procedures to obtain audit evidence about the amounts and disclosures in the consolidated financial statements. The procedures selected depend on the auditor's judgment, including the assessment of the risks of material misstatement of the consolidated financial statements, whether due to fraud or error. In making those risk assessments, the auditor considers internal control relevant to the entity's preparation and fair presentation of the consolidated financial statements in order to design audit procedures that are appropriate in the circumstances, but not for the purpose of expressing an opinion on the effectiveness of the entity's internal control. Accordingly, we express no such opinion. An audit also includes evaluating the appropriateness of accounting policies used and the reasonableness of significant accounting estimates made by management, as well as evaluating the overall presentation of the consolidated financial statements.

CONFIDENTIAL

We believe that the audit evidence we have obtained is sufficient and appropriate to provide a basis for our audit opinion.

Opinion

In our opinion, the consolidated financial statements referred to above present fairly, in all material respects, the financial position of Graham County Land Company, LLC and its subsidiary as of December 31, 2019, and the results of its operations and its cash flows for the year then ended in accordance with accounting principles generally accepted in the United States of America.

Report on Supplementary Information

Our audit was conducted for the purpose of forming an opinion on the consolidated financial statements as a whole. The supplementary schedules on pages 20 - 26 are presented for purposes of additional analysis and are not a required part of the consolidated financial statements. Such information is the responsibility of management and was derived from and relates directly to the underlying accounting and other records used to prepare the consolidated financial statements. The information has been subjected to the auditing procedures applied in the audit of the consolidated financial statements and certain additional procedures, including comparing and reconciling such information directly to the underlying accounting and other records used to prepare the consolidated financial statements or to the consolidated financial statements themselves, and other additional procedures in accordance with auditing standards generally accepted in the United States of America. In our opinion, the information is fairly stated in all material respects in relation to the consolidated financial statements as a whole.

A handwritten signature in dark ink, appearing to be 'DLC' or similar, written in a cursive style.

Suwanee, GA
August 20, 2020

GRAHAM COUNTY LAND COMPANY, LLC
AND SUBSIDIARY
CONSOLIDATED BALANCE SHEET
DECEMBER 31, 2019

CONFIDENTIAL

ASSETS

	<u>2019</u>
CURRENT ASSETS	
Cash (Note 1)	\$ 720,571
Accounts receivable, net (Note 2)	3,036,291
Costs and earnings in excess of billings on uncompleted contracts (Note 4)	4,007,983
Assets available for sale (Note 1)	725,917
Other current assets	127,870
Due from related party (Note 3)	211,597
Inventory (Note 1)	<u>898,621</u>
TOTAL CURRENT ASSETS	9,728,850
GOODWILL	70,000
PROPERTY AND EQUIPMENT (Note 5)	
Property, equipment and vehicles	19,097,312
Accumulated depreciation	<u>(5,716,332)</u>
NET PROPERTY AND EQUIPMENT	<u>13,380,980</u>
TOTAL ASSETS	<u><u>\$ 23,179,830</u></u>

GRAHAM COUNTY LAND COMPANY, LLC
AND SUBSIDIARY
CONSOLIDATED BALANCE SHEET
DECEMBER 31, 2019

CONFIDENTIAL

LIABILITIES AND MEMBER'S EQUITY

	<u>2019</u>
CURRENT LIABILITIES	
Contract and accounts payable	\$ 2,047,269
Billing in excess of earnings and costs on uncompleted contracts (Note 4)	222,654
Lines of credit (Note 6)	757,296
Current portion of notes payable (Note 6)	<u>3,556,807</u>
TOTAL CURRENT LIABILITIES	6,584,026
 LONG TERM LIABILITIES	
Long term portion of notes payable (Note 6)	<u>6,771,516</u>
TOTAL LONG TERM LIABILITIES	6,771,516
 MEMBER'S EQUITY	<u>9,824,288</u>
TOTAL LIABILITIES AND MEMBER'S EQUITY	<u><u>\$ 23,179,830</u></u>

GRAHAM COUNTY LAND COMPANY, LLC
AND SUBSIDIARY
CONSOLIDATED STATEMENT OF INCOME
YEAR ENDED DECEMBER 31, 2019

CONFIDENTIAL

	2019
PROFITS FROM CONTRACTS	
Construction revenues	\$ 54,388,363
Construction costs	<u>(39,775,178)</u>
GROSS PROFITS FROM CONTRACTS	14,613,185
GENERAL AND ADMINISTRATIVE EXPENSES	<u>(9,716,962)</u>
NET OPERATING PROFIT (LOSS)	4,896,223
OTHER INCOME (EXPENSES)	
Other income (expense)	(1,779)
Gain (Loss) on sale of equipment	(68,671)
Interest income (expense)	<u>(749,294)</u>
TOTAL OTHER INCOME (EXPENSES)	(819,744)
NET INCOME (LOSS)	<u><u>\$ 4,076,479</u></u>

GRAHAM COUNTY LAND COMPANY, LLC
AND SUBSIDIARY
CONSOLIDATED STATEMENT OF CHANGES IN MEMBER'S EQUITY
DECEMBER 31, 2019

CONFIDENTIAL

	Member Units	Additional Paid-in Capital	Retained Earnings	Total Member's Equity
December 31, 2018	\$ 122,262	\$ 1,488,534	\$ 4,137,013	\$ 5,747,809
Net income (loss)	-	-	4,076,479	4,076,479
December 31, 2019	<u>\$ 122,262</u>	<u>\$ 1,488,534</u>	<u>\$ 8,213,492</u>	<u>\$ 9,824,288</u>

GRAHAM COUNTY LAND COMPANY, LLC
AND SUBSIDIARY
CONSOLIDATED STATEMENT OF CASH FLOWS
DECEMBER 31, 2019

CONFIDENTIAL

	<u>2019</u>
CASH FLOWS FROM OPERATING ACTIVITIES	
Net income (loss)	\$ 4,076,479
Adjustments to reconcile net income to net cash provided by operations:	
Depreciation	2,623,226
Gain (loss) on sale of equipment	(68,671)
(Increase) decrease in:	
Contracts receivable	1,897,095
Due from related party	140,193
Inventory	(262,175)
Assets available for sale	575,459
Other current assets	291,907
Costs and earnings in excess of billings on uncompleted contracts	(3,723,555)
Increase (decrease) in:	
Accounts payable	(1,173,553)
Accrued expenses	(36,704)
Billings in excess of costs and earning on uncompleted contracts	-
Net cash flow provided (used) by operating activities	<u>4,339,701</u>
CASH FLOWS FROM INVESTING ACTIVITIES	
Purchase of property and equipment	(5,298,338)
Goodwill	-
Proceeds from sale of property and equipment	(471,129)
Net cash used by investing activities	<u>(5,769,467)</u>
CASH FLOWS FROM FINANCING ACTIVITIES	
New borrowings	2,736,952
Repayment of debt	(710,169)
Related party payable	-
Contributions	-
Distributions	-
Net cash provided by financing activities	<u>2,026,783</u>
NET CHANGE IN CASH	\$ 597,017
CASH AT BEGINNING OF YEAR	<u>\$ 123,554</u>
CASH AT END OF YEAR	<u>\$ 720,571</u>
SUPPLEMENTAL DISCLOSURES:	
INTEREST PAID	<u>749,294</u>

GRAHAM COUNTY LAND COMPANY, LLC
AND SUBSIDIARY
SCHEDULE OF COMPLETED AND UNCOMPLETED CONTRACTS
YEAR ENDED DECEMBER 31, 2019

Estimated Total Contract															Year to Date 12/31/19															Contract to Date 12/31/19															(Under) Costs & Est. Billings in Excess of Billings															(Over) Costs & Est. Billings in Excess of Billings																																																																																																																																																																																																																																																																																																																																																																																																																																																																																																																																																																																																																																																																																																																																																																																																																																																																																																																																																																																																																																																																																																																																																																																																																																																																																																																																																																																																																																																																																																																																																																																																																																																																																																																																																																																																																																																																																																																																																																																																																																																																																																																																																																																																																																																																																																																																																																																																																																																																																																																																																																																																																																																																																																																																																																																																																																																																																																																																																																																																																																																																																																																																																																																																																																																																																																																																																																																																																																																																																																																																																																																																																																																																																																																																																																																																																																																																																																																																																																																																																																																																																																																																																																																																																																																																																																																																																																																																																																																																																																																																																																																																																																																																																																																																																																																																																																																																																																																																																																																																																																																																																																																																																																																																																																																																																																																																																																																																																																																																																																																																																																																																																																																																																																																																																																																																																																																																																																																																																																																																																																																																																																																																																																																																																																																																																																																																																																																																																																																																																																																																																																																																																																																																																																																																																																																																																																																																																																																																																																																																																																																																																																																																																																																																																																																																																																																																																																																																																																																																																																																																																																																																																																																																																																																																																																																																																																																																																																																																																																																																																																																																																																																																																																																																																																																																																																																																																																																																																																																																																																																																																																																																																																																																																																																																																																																																																																																																																																																																																																																																																																																																																																																																																																																																																																																																																																																																																																																																																																																																																																																																																																																																																																																																																																																																																																																																																																																																																																																																																																																																																																																																																																																																																																																																																																																																																																																																																																																																																																																																																																																																																																																																																																																																																																																																																																																																																																																																																																																																																																																																																																																																																																																																																																																																																																																																																																																																																																																																																																																																																																																																																																																																																																																																																																																																																																																																																																																																																																																																																																																																																																																																																																																																																																																																																																																																																																																																																																																																																																																																																																																																																																																																																																																																																																																																																																																																																																																																																																																																																																																																																																																																																																																																																																																																																																																																																																																																																																																																																																																																																																																																																																																																																																																																																																																																																																																																																																																																																																																																																																																																																																																																																																																																																																																																																																																																																																																																																																																																																																																																																																																																																																																																																																																																																																																																																																																																																																																																																																																																																																																
Contracts in Progress:															Revenue															Cost															Gross Profit															Revenue															Cost															Gross Profit															Profit Percent															Percent Complete															Billings To Date															Backlog																																																																																																																																																																																																																																																																																																																																																																																																																																																																																																																																																																																																																																																																																																																																																																																																																																																																																																																																																																																																																																																																																																																																																																																																																																																																																																																																																																																																																																																																																																																																																																																																																																																																																																																																																																																																																																																																																																																																																																																																																																																																																																																																																																																																																																																																																																																																																																																																																																																																																																																																																																																																																																																																																																																																																																																																																																																																																																																																																																																																																																																																																																																																																																																																																																																																																																																																																																																																																																																																																																																																																																																																																																																																																																																																																																																																																																																																																																																																																																																																																																																																																																																																																																																																																																																																																																																																																																																																																																																																																																																																																																																																																																																																																																																																																																																																																																																																																																																																																																																																																																																																																																																																																																																																																																																																																																																																																																																																																																																																																																																																																																																																																																																																																																																																																																																																																																																																																																																																																																																																																																																																																																																																																																																																																																																																																																																																																																																																																																																																																																																																																																																																																																																																																																																																																																																																																																																																																																																																																																																																																																																																																																																																																																																																																																																																																																																																																																																																																																																																																																																																																																																																																																																																																																																																																																																																																																																																																																																																																																																																																																																																																																																																																																																																																																																																																																																																																																																																																																																																																																																																																																																																																																																																																																																																																																																																																																																																																																																																																																																																																																																																																																																																																																																																																																																																																																																																																																																																																																																																																																																																																																																																																																																																																																																																																																																																																																																																																																																																																																																																																																																																																																																																																																																																																																																																																																																																																																																																																																																																																																																																																																																																																																																																																																																																																																																																																																																																																																																																																																																																																																																																																																																																																																																																																																																																																																																																																																																																																																																																																																																																																																																																																																																																																																																																																																																																																																																																																																																																																																																																																																																																																																																																																																																																																																																																																																																																																																																																																																																																																																																																																																																																																																																																																																																																																																																																																																																																																																																																																																																																																																																																																																																																																																																																																																																																																																																																																																																																																																																																																																																																																																																																																																																																																																																																																																																																																																																																																																																																																																																																																																																																																																																																																																																																																																																																																																																																																																																																																																																																																																																																																																																																																																																																																																																																																																																																																																																																																						

CONFIDENTIAL

[illegible]Total contracts

GRAHAM COUNTY LAND COMPANY, LLC
AND SUBSIDIARY
SCHEDULE OF GENERAL AND ADMINISTRATIVE COSTS
YEAR ENDED DECEMBER 31, 2019

CONFIDENTIAL

	2019
Salaries	\$ 2,592,566
Depreciation	2,623,226
Repairs and maintenance	543,612
Travel	749,660
Professional fees	163,141
Bad debt	-
Shop expense	97,934
Fuel	428,295
Office	313,831
Insurance	883,702
Taxes and licenses	191,604
Rent	153,752
Telephone and utilities	194,645
Meals and entertainment	179,223
Payroll taxes and benefits	154,613
Software	57,004
Safety expense	40,940
Contributions	16,878
Small tools	46,476
Lease expense	194,948
Miscellaneous	296
Engineering expense	8,335
Advertising	47,050
Bank fees	25,985
Bid expense	9,246
Totals	<u>\$ 9,716,962</u>

CONFIDENTIAL

GRAHAM COUNTY LAND COMPANY, LLC
AND SUBSIDIARY
CONSOLIDATING BALANCE SHEET
YEAR ENDED DECEMBER 31, 2019

ASSETS

	GCLC	Nat Civil	Elimination	Consolidated
CURRENT ASSETS				
Cash	\$ 712,971	\$ 7,600	\$ -	\$ 720,571
Accounts receivable, net	2,387,329	648,962	-	3,036,291
Costs and earnings in excess of billings on uncompleted contracts	4,007,983	-	-	-
Assets available for sale	725,917	-	-	4,007,983
Other current assets	87,489	40,381	-	725,917
Due from related party	283,186	-	(71,589)	127,870
Inventory	898,621	-	-	211,597
TOTAL CURRENT ASSETS	9,103,496	696,943	(71,589)	9,728,850
GOODWILL	70,000	-	-	70,000
PROPERTY AND EQUIPMENT				
Property, equipment and vehicles	16,306,389	2,790,923	-	19,097,312
Accumulated depreciation	(5,051,546)	(664,786)	-	(5,716,332)
NET PROPERTY AND EQUIPMENT	11,254,843	2,126,137	-	13,380,980
TOTAL ASSETS	\$ 20,428,339	\$ 2,823,080	\$ (71,589)	\$ 23,179,830

CONFIDENTIAL

GRAHAM COUNTY LAND COMPANY, LLC AND SUBSIDIARY CONSOLIDATING BALANCE SHEET YEAR ENDED DECEMBER 31, 2019

LIABILITIES AND MEMBER'S EQUITY

	GCLC	Nat Civil	Elimination	Consolidated
CURRENT LIABILITIES				
Contract and accounts payable	\$ 1,873,975	\$ 173,294	\$ -	\$ 2,047,269
Accrued expenses	-	-	-	-
Billing in excess of earnings and costs on uncompleted contracts	222,654	-	-	222,654
Lines of credit	757,296	-	-	757,296
Factoring	-	-	-	-
Current portion of notes payable	2,990,255	566,552	-	3,556,807
TOTAL CURRENT LIABILITIES	5,844,180	739,846	-	6,584,026
LONG TERM LIABILITIES				
Long term portion of notes payable	5,530,502	1,241,014	-	6,771,516
TOTAL LONG TERM LIABILITIES	5,530,502	1,241,014	-	6,771,516
MEMBER'S EQUITY				
	9,053,657	842,220	(71,589)	9,824,288
TOTAL LIABILITIES AND MEMBER'S EQUITY	\$ 20,428,339	\$ 2,823,080	\$ (71,589)	\$ 23,179,830

GRAHAM COUNTY LAND COMPANY, LLC
AND SUBSIDIARY
CONSOLIDATING STATEMENT OF INCOME
YEAR ENDED DECEMBER 31, 2019

CONFIDENTIAL

	GCLC	Nat Civil	Eliminated	Consolidated
PROFITS FROM CONTRACTS				
Construction revenues	\$ 51,152,292	\$ 3,307,660	\$ (71,589)	\$ 54,388,363
Construction costs	(37,771,801)	(2,003,377)	-	(39,775,178)
GROSS PROFITS FROM CONTRACTS	13,380,491	1,304,283	(71,589)	14,613,185
GENERAL AND ADMINISTRATIVE EXPENSES	(8,750,182)	(966,780)	-	(9,716,962)
NET OPERATING PROFIT (LOSS)	4,630,309	337,503	(71,589)	\$ 4,896,223
OTHER INCOME (EXPENSES)				
Other income (expense)	-	(1,779)	-	\$ (1,779)
Gain (Loss) on sale of equipment	32,989	(101,660)	-	\$ (68,671)
Interest income (expense)	(624,996)	(124,298)	-	(749,294)
TOTAL OTHER INCOME (EXPENSES)	(592,007)	(227,737)	-	(819,744)
NET INCOME (LOSS)	\$ 4,038,302	\$ 109,766	\$ (71,589)	\$ 4,076,479



GRAHAM COUNTY LAND COMPANY, LLC

FINANCIAL STATEMENTS AND
INDEPENDENT ACCOUNTANT'S COMPILATION REPORT
ONE MONTH ENDED MARCH 31, 2021 AND FEBRUARY 28, 2021

ROBBINSVILLE, NC

DLC CPAs

Certified Public Accountants

TABLE OF CONTENTS

	Page
Independent accountant's compilation report	1
FINANCIAL STATEMENTS:	
Balance sheet	2-3
Statement of income	4
Statement of changes in member's equity	5
Statement of cash flows	6
Uncompleted and completed contracts	7
Statement of income – twelve months ended	8



INDEPENDENT ACCOUNTANT'S COMPILATION REPORT

To the Board of Directors of
Graham County Land Company, LLC

Management is responsible for the accompanying financial statements of Graham County Land Company, LLC, which comprise the balance sheet as of March 31, 2021 and February 28, 2021 and the related statements of income and members' equity and cash flows for the one month then ended in accordance with accounting principles generally accepted in the United States of America. We have performed a compilation engagement in accordance with Statements on Standards for Accounting and Review Services promulgated by the Accounting and Review Services Committee of the AICPA. We did not audit or review the financial statements nor were we required to perform any procedures to verify the accuracy or completeness of the information provided by management. We do not express an opinion, a conclusion, nor provide any assurance on these financial statements.

Management has elected to omit substantially all the disclosures required by accounting principles generally accepted in the United States of America. If the omitted disclosures were included in the financial statements, they might influence the user's conclusions about the Company's financial position, results of operations, and cash flows. Accordingly, the financial statements are not designed for those who are not informed about such matters.

A handwritten signature in dark ink, appearing to read 'DLC', is positioned above the date and location.

Suwanee, GA
May 20, 2021

ASSETS

	<u>March 31, 2021</u>	<u>February 28, 2021</u>
CURRENT ASSETS		
Cash	\$ 676,179	\$ 1,062,706
Accounts receivable	12,525,939	13,167,852
Other receivables	2,648,168	1,738,082
Prepaid expense	473,740	488,818
Intercompany receivable	-	-
Costs and earnings in excess of billings on uncompleted contracts	2,801,345	2,919,286
Assets available for sale	3,906,069	4,094,340
Other receivables	23,620	23,682
Inventory and supplies	1,329,792	1,315,770
TOTAL CURRENT ASSETS	<u>24,384,852</u>	<u>24,810,536</u>
PROPERTY AND EQUIPMENT		
Property, equipment and vehicles	16,433,514	16,418,514
Accumulated depreciation	(7,922,911)	(7,837,805)
NET PROPERTY AND EQUIPMENT	<u>8,510,603</u>	<u>8,580,709</u>
OTHER ASSETS		
Intangibles	70,000	70,000
TOTAL ASSETS	<u>\$ 32,965,455</u>	<u>\$ 33,461,245</u>

LIABILITIES AND MEMBER'S EQUITY

	<u>March 31, 2021</u>	<u>February 28, 2021</u>
CURRENT LIABILITIES		
Contract and accounts payable	\$ 4,103,252	\$ 5,046,754
Billing in excess of earnings and costs on uncompleted contracts	362,618	522,275
Lines of credit	607,989	625,788
Current portion of notes payable	<u>10,667,527</u>	<u>9,385,809</u>
TOTAL CURRENT LIABILITIES	<u>15,741,386</u>	<u>15,580,626</u>
LONG TERM LIABILITIES		
Long term portion of notes payable	<u>11,536,050</u>	<u>11,896,775</u>
TOTAL LONG TERM LIABILITIES	<u>11,536,050</u>	<u>11,896,775</u>
TOTAL LIABILITIES	27,277,436	27,477,401
MEMBER'S EQUITY	<u>5,688,019</u>	<u>5,983,844</u>
TOTAL LIABILITIES AND MEMBER'S EQUITY	<u><u>\$ 32,965,455</u></u>	<u><u>\$ 33,461,245</u></u>

	<u>March 31, 2021</u>	<u>February 28, 2021</u>
PROFITS FROM CONTRACTS		
Construction revenues	\$ 3,298,018	\$ 4,274,128
Construction costs	<u>(2,522,258)</u>	<u>(3,525,240)</u>
GROSS PROFITS FROM CONTRACTS	775,760	748,888
GENERAL AND ADMINISTRATIVE EXPENSES	<u>(913,870)</u>	<u>(800,890)</u>
NET OPERATING PROFIT (LOSS)	<u>(138,110)</u>	<u>(52,002)</u>
OTHER INCOME (EXPENSES)		
Other income (expense)	44,597	2,013,627
Gain (Loss) on sale of equipment	25,447	(39,896)
Interest income (expense)	<u>(225,988)</u>	<u>(367,864)</u>
TOTAL OTHER INCOME (EXPENSES)	<u>(155,944)</u>	<u>1,605,867</u>
NET INCOME (LOSS)	<u>\$ (294,054)</u>	<u>\$ 1,553,865</u>

	<u>Member Equity</u>	<u>Additional Paid-in Capital</u>	<u>Retained Earnings</u>	<u>Total Member's Equity</u>
February 28, 2021	\$ 1,073,946	\$ 519,451	4,388,676	\$ 5,982,073
Net income (loss)	-	-	(294,054)	(294,054)
Distributions	-	-	-	-
March 31, 2021	<u>\$ 1,073,946</u>	<u>\$ 519,451</u>	<u>\$ 4,094,622</u>	<u>\$ 5,688,019</u>

March 31, 2021

CASH FLOWS FROM OPERATING ACTIVITIES

Net income (loss)	\$ (294,054)
Adjustments to reconcile net income to net cash provided by operations:	
Depreciation	85,106
(Increase) decrease in:	
Contracts receivable	641,913
Other current assets	1,714,462
Inventory	(14,022)
Intercompany receivables	(2,624,486)
Assets available for sale	188,271
Other receivables	15,078
Gain (loss) on sale of equipment	-
Costs and earnings in excess of billings on uncompleted contracts	117,941
Increase (decrease) in:	
Accounts payable	(943,502)
Accrued expenses	-
Due from related party	-
Billings in excess of costs and earning on uncompleted contracts	(159,657)
Net cash flow provided by operating activities	\$ (1,272,950)

CASH FLOWS FROM INVESTING ACTIVITIES

Gain (loss) on sale of equipment	-
Change in goodwill	-
Decrease(increase in Stockholder's receivable	-
Purchase of property and equipment	(15,000)
Net cash used by investing activities	\$ (15,000)

CASH FLOWS FROM FINANCING ACTIVITIES

New borrowings	903,194
Distributions	-
Contributions	-
Net cash provided by financing activities	\$ 903,194
NET CHANGE IN CASH	\$ (384,756)
CASH AT BEGINNING OF YEAR	\$ 1,062,706
CASH AT END OF PERIOD	\$ 677,950
SUPPLEMENTAL DISCLOSURES:	
INTEREST PAID	\$ -

	<u>March 31, 2021</u>
PROFITS FROM CONTRACTS	
Construction revenues	\$ 14,480,103
Construction costs	<u>(11,312,349)</u>
GROSS PROFITS FROM CONTRACTS	3,167,754
GENERAL AND ADMINISTRATIVE EXPENSES	<u>(2,349,218)</u>
NET OPERATING PROFIT (LOSS)	<u>818,536</u>
OTHER INCOME (EXPENSES)	
Other income (expense)	2,061,647
Gain (Loss) on sale of equipment	(11,717)
Interest income (expense)	<u>(664,583)</u>
TOTAL OTHER INCOME (EXPENSES)	<u>1,385,347</u>
EXTRAORDINARY INCOME (EXPENSES)	-
NET INCOME (LOSS)	<u><u>\$ 2,203,883</u></u>

Project Name	Year to Date 03/31/21				Contract to Date 03/31/21				Percent Complete	Billings To Date	Backlog	(Under) Billings in Excess of Cost & of Billings	(Over) Billings in Excess of Cost & of Billings	
	Estimated Total Contract		Gross Profit		Gross Profit		Profit							
	Revenue	Cost	Gross Profit	Revenue	Cost	Gross Profit	Revenue	Percent						
Contracts in Progress:														
SCDOT, Contract DSN18071446, Spaw & Lee Removal, Milton, NC	\$ 2,342,600	\$ 1,457,600	\$ 884,000	\$ 75,498	\$ 16,374	\$ 8,024	\$ 1,724,183	\$ 1,118,769	\$ 605,414	35.00%	\$ 1,300,836	\$ 141,764	\$ 290,347	\$ -
NCDOT, Contract C2002654, Spaw & Lee Removal, Milton, NC	\$ 1,503,661	\$ 1,554,612	\$ 239,000	\$ 18,459	\$ 15,673	\$ 2,786	\$ 1,480,446	\$ 1,267,729	\$ 212,717	13.00%	\$ 93,596	\$ 1,401,446	\$ 99,244	\$ -
SCDOT, Contract C2002654, Spaw & Lee Removal, Milton, NC	\$ 500,000	\$ 425,000	\$ 75,000	\$ 40,876	\$ 34,744	\$ 6,131	\$ 465,226	\$ 344,432	\$ 60,794	15.00%	\$ 81,584	\$ 477,491	\$ 27,509	\$ 67,925
Archie-Wright, NCDOT, Contract C2002654, Spaw & Lee Removal, Milton, NC	\$ 1,025,700	\$ 1,463,184	\$ 63,281	\$ 27,533	\$ 23,655	\$ 3,878	\$ 1,462,714	\$ 1,316,407	\$ 146,307	10.00%	\$ 80,978	\$ 1,459,311	\$ 168,240	\$ 3,103
Veolia, NCDOT, Contract C2002654, Spaw & Lee Removal, Milton, NC	\$ 1,302,600	\$ 1,400,000	\$ 202,840	\$ 230,131	\$ 198,400	\$ 31,731	\$ 1,400,000	\$ 1,271,600	\$ 128,400	15.00%	\$ 105,766	\$ 1,376,366	\$ 246,634	\$ -
Veolia, NCDOT, Contract C2002654, Spaw & Lee Removal, Milton, NC	\$ 564,000	\$ 309,400	\$ 54,000	\$ 122,078	\$ 103,766	\$ 18,312	\$ 122,078	\$ 103,766	\$ 18,312	15.00%	\$ 13,546	\$ 128,600	\$ 256,000	\$ -
SCDOT, Contract C2002654, Spaw & Lee Removal, Milton, NC	\$ 1,244,871	\$ 1,054,559	\$ 189,312	\$ 5,902	\$ 5,016	\$ 885	\$ 1,244,871	\$ 1,054,559	\$ 190,312	15.00%	\$ 25,596	\$ 1,280,559	\$ 36,996	\$ -
Greenlee-Spartanburg Airport, GA Development - PHHA, NC	\$ 3,083,545	\$ 2,776,810	\$ 306,735	\$ 67,226	\$ 45,783	\$ 13,446	\$ 2,776,810	\$ 2,429,584	\$ 347,226	10.00%	\$ 40,796	\$ 2,470,380	\$ 354,800	\$ -
Reynolds & Reynolds, Inc., Disaster Debris Removal and Disposal, I.A.	\$ 9,000,000	\$ 6,300,000	\$ 2,700,000	\$ 2,602,066	\$ 1,821,446	\$ 780,620	\$ 6,300,000	\$ 4,154,499	\$ 2,145,501	30.00%	\$ 30,636	\$ 4,185,135	\$ 481,656	\$ -
Greenlee-Spartanburg Airport, GA Development - PHHA, NC	\$ 1,999,700	\$ 1,497,775	\$ 49,925	\$ 74,622	\$ 45,907	\$ 18,576	\$ 1,497,775	\$ 1,318,437	\$ 179,338	15.00%	\$ 20,424	\$ 1,518,861	\$ 198,422	\$ -
Jackson County, District 1 and 4 Unimproved Roadway Repairs, FL	\$ 1,747,844	\$ 1,485,667	\$ 262,177	\$ 43,333	\$ 36,833	\$ 6,500	\$ 1,485,667	\$ 1,318,437	\$ 167,230	15.00%	\$ 19,333	\$ 1,507,770	\$ 188,437	\$ -
SCDOT, Contract C2002654, Spaw & Lee Removal, Milton, NC	\$ 349,000	\$ 296,636	\$ 52,364	\$ 46,963	\$ 39,200	\$ 7,045	\$ 349,000	\$ 296,636	\$ 52,364	15.00%	\$ 15,840	\$ 314,400	\$ 314,400	\$ 70,118
Alabama Dept. of Transportation, Disaster Debris Removal, OK	\$ 7,000,000	\$ 5,040,000	\$ 1,960,000	\$ 484,500	\$ 3,886,601	\$ 1,355,901	\$ 5,977,621	\$ 4,303,599	\$ 1,674,022	28.00%	\$ 85,194	\$ 5,792,606	\$ 1,266,314	\$ 183,550
South Trunkline, Concord, FL	\$ 600,000	\$ 438,000	\$ 162,000	\$ 25,022	\$ 18,576	\$ 6,450	\$ 574,978	\$ 416,522	\$ 159,456	42.00%	\$ 27,408	\$ 574,978	\$ 370,573	\$ -
Greenlee-Spartanburg Airport, GA Development - PHHA, NC	\$ 199,700	\$ 149,775	\$ 49,925	\$ 74,622	\$ 45,907	\$ 18,576	\$ 149,775	\$ 101,269	\$ 48,506	35.00%	\$ 17,298	\$ 166,567	\$ 141,789	\$ -
Greenlee-Spartanburg Airport, GA Development - PHHA, NC	\$ 325,000	\$ 275,250	\$ 49,750	\$ 14,500	\$ 12,400	\$ 2,100	\$ 325,000	\$ 275,250	\$ 49,750	15.00%	\$ 3,600	\$ 321,450	\$ 317,850	\$ 33,600
SCDOT, Contract C2002654, Spaw & Lee Removal, Milton, NC	\$ 250,000	\$ 215,500	\$ 34,500	\$ 31,000	\$ 26,500	\$ 4,500	\$ 250,000	\$ 215,500	\$ 34,500	15.00%	\$ 3,600	\$ 246,900	\$ 243,300	\$ -
NCDOT, Contract DTP00021015, Disaster Debris Removal, Brunswick, NC	\$ 400,000	\$ 340,000	\$ 60,000	\$ 121,592	\$ 10,335	\$ 1,824	\$ 400,000	\$ 340,000	\$ 60,000	15.00%	\$ 3,600	\$ 340,000	\$ 340,000	\$ -
Baker Construction, Black Creek, Charlotte, NC	\$ 283,800	\$ 241,250	\$ 42,550	\$ -	\$ -	\$ -	\$ 283,800	\$ 241,250	\$ 42,550	0.00%	\$ -	\$ 283,800	\$ 283,800	\$ -
SCDOT, Contract C2002654, Spaw & Lee Removal, Milton, NC	\$ 5,488,950	\$ 5,211,651	\$ 1,327,299	\$ 1,455,813	\$ 76,622	\$ 76,622	\$ 4,141,100	\$ 3,974,045	\$ 207,055	5.00%	\$ 75,994	\$ 4,248,039	\$ 1,252,457	\$ 119,108
City of Hickory Projects	\$ 612,404	\$ 520,541	\$ 91,863	\$ 45,463	\$ 38,943	\$ 6,520	\$ 571,941	\$ 481,618	\$ 90,323	75.1%	\$ 1,196	\$ 571,941	\$ 470,444	\$ -
Contract in Progress With Revenue Less Than \$100,000	\$ 1,880,634	\$ 1,584,397	\$ 296,237	\$ 1,038,793	\$ 831,059	\$ 20,759	\$ 1,880,634	\$ 1,584,397	\$ 296,237	20.00%	\$ 73,408	\$ 1,657,805	\$ 957,479	\$ 1,053,153
Total contracts in progress														
	\$ 42,297,814	\$ 33,671,853	\$ 8,623,861	\$ 9,959,594	\$ 12,843,458	\$ 2,883,864	\$ 32,459,470	\$ 25,918,863	\$ 6,540,607		\$ 30,420,742	\$ 11,977,071	\$ 2,801,345	\$ 362,618
Completed Contracts:														
City of Hickory Projects	\$ 1,546,909	\$ 1,108,212	\$ 438,758	\$ 21,199	\$ 15,186	\$ 6,011	\$ 1,546,909	\$ 1,108,212	\$ 438,758	78.00%	\$ 28,506	\$ 1,000,000	\$ 1,000,000	\$ -
SCDOT, Contract C2002654, Spaw & Lee Removal, Milton, NC	\$ 3,809,343	\$ 3,521,078	\$ 288,265	\$ 61,263	\$ 4,650	\$ 4,650	\$ 3,809,343	\$ 3,521,078	\$ 288,265	75.00%	\$ 27,527	\$ 1,000,000	\$ 1,000,000	\$ -
SCDOT, Contract C2002654, Spaw & Lee Removal, Milton, NC	\$ 1,526,153	\$ 1,141,658	\$ 384,495	\$ 76,780	\$ 20,038	\$ 20,038	\$ 1,526,153	\$ 1,141,658	\$ 384,495	75.00%	\$ 27,527	\$ 1,000,000	\$ 1,000,000	\$ -
SCDOT, Contract C2002654, Spaw & Lee Removal, Milton, NC	\$ 713,827	\$ 541,631	\$ 192,196	\$ 80,713	\$ 49,721	\$ 49,721	\$ 713,827	\$ 541,631	\$ 192,196	76.2%	\$ 26,200	\$ 1,000,000	\$ 1,000,000	\$ -
Baker, Shiloh, SC, John Co, FL	\$ 960,581	\$ 887,401	\$ 73,180	\$ 17,494	\$ 1,494	\$ 1,494	\$ 960,581	\$ 887,401	\$ 73,180	76.2%	\$ 7,626	\$ 1,000,000	\$ 1,000,000	\$ -
Greenlee-Spartanburg Airport, GA Development - PHHA, NC	\$ 304,222	\$ 304,222	\$ 262,851	\$ 37,399	\$ 17,332	\$ 17,332	\$ 567,074	\$ 46,536	\$ 262,851	46.5%	\$ 46,536	\$ 1,000,000	\$ 1,000,000	\$ -
Greenlee-Spartanburg Airport, GA Development - PHHA, NC	\$ 556,371	\$ 539,313	\$ 17,058	\$ 17,058	\$ 17,058	\$ 17,058	\$ 556,371	\$ 539,313	\$ 17,058	100.00%	\$ -	\$ 1,000,000	\$ 1,000,000	\$ -
W. Matthews, 000814, SR 156 Reclamation - Piedmont County, GA	\$ 207,900	\$ 184,429	\$ 23,471	\$ 103,553	\$ 21,892	\$ 21,892	\$ 207,900	\$ 184,429	\$ 23,471	75.0%	\$ 1,799	\$ 1,000,000	\$ 1,000,000	\$ -
City of Hickory Projects	\$ 323,800	\$ 188,475	\$ 135,325	\$ 36,000	\$ 20,558	\$ 20,558	\$ 323,800	\$ 188,475	\$ 135,325	41.7%	\$ 41,796	\$ 1,000,000	\$ 1,000,000	\$ -
Greenlee-Spartanburg Airport, GA Development - PHHA, NC	\$ 1,077,250	\$ 96,242	\$ 3,082	\$ 11,008	\$ 96,242	\$ 11,008	\$ 1,077,250	\$ 10,262	\$ 11,008	10.2%	\$ 10,262	\$ 1,000,000	\$ 1,000,000	\$ -
Jackson Parish, District 1 and 4 Unimproved Roadway Repairs, FL	\$ 1,278,968	\$ 864,453	\$ 414,515	\$ 167,165	\$ 70,488	\$ 70,488	\$ 1,278,968	\$ 864,453	\$ 414,515	68.4%	\$ 414,515	\$ 1,000,000	\$ 1,000,000	\$ -
City of Hickory Projects	\$ 2,539,699	\$ 1,890,791	\$ 648,908	\$ 174,201	\$ 46,057	\$ 46,057	\$ 2,539,699	\$ 1,890,791	\$ 648,908	75.5%	\$ 648,908	\$ 1,000,000	\$ 1,000,000	\$ -
Shiloh, SC, John Co, FL	\$ 681,331	\$ 609,439	\$ 71,892	\$ 41,470	\$ 3,483	\$ 3,483	\$ 681,331	\$ 609,439	\$ 71,892	73.0%	\$ 71,892	\$ 1,000,000	\$ 1,000,000	\$ -
Greenlee-Spartanburg Airport, GA Development - PHHA, NC	\$ 132,600	\$ 118,643	\$ 13,957	\$ 132,600	\$ 118,643	\$ 13,957	\$ 132,600	\$ 118,643	\$ 13,957	10.2%	\$ 13,957	\$ 1,000,000	\$ 1,000,000	\$ -
Greenlee-Spartanburg Airport, GA Development - PHHA, NC	\$ 16,020,847	\$ 12,704,224	\$ 3,316,624	\$ 1,352,748	\$ 283,896	\$ 283,896	\$ 16,020,847	\$ 12,704,224	\$ 3,316,624			\$ 2,801,345	\$ 362,618	\$ -
Total contracts														
	\$ 58,318,661	\$ 46,378,076	\$ 11,940,484	\$ 11,312,342	\$ 3,167,754	\$ 3,167,754	\$ 48,880,317	\$ 38,623,086	\$ 10,257,230		\$ 30,420,742	\$ 11,977,071	\$ 2,801,345	\$ 362,618

TAB D: REFERENCES

SIGNIFICANT DISASTER EVENTS

PROJECT TITLE /	DATES	TOTAL CY	TOTAL AMT	CONTACT
Hurricane Laura Cleanup Beauregard Parish, Louisiana	9/2020 - 03/2021	1,501,378	\$8,639,155	Beauregard Parish - Bryan McReynolds, Parish Admin. 201 W 2nd St, DeRidder, LA 70634 BryanM@beauparish.org (337)463-7019
Hurricane Laura Cleanup City of DeRidder, Louisiana	9/2020 - 02/2021	357,537	\$2,539,699	City of DeRidder - Tommy Landry, Dir. Public Works 200 S. Jefferson St, DeRidder, LA 70634 TLandry@cityofderidder.org (337)375-3001
Post Storm Cleanup Sulphur Parks, Louisiana	10/2020 - 12/2020	63,772	\$656,051	Sulphur Parks - Laurie Koelzer, Administration Manager 933 W. Parish Rd, Sulphur, LA 70663 SPAR@sulphurparks.com / (337)527-2500
Hurricane Laura Cleanup Jackson Parish, Louisiana	10/2020 - 01/2021	51,118	\$976,782	Jackson Parish - Gina Thomas, Secretary/Treasurer 500 E. Court St, Jonesboro, LA 71251 Gthomas@jppl.org (318) 259-2361
Hurricane Laura Cleanup City of Carencro, Louisiana	9/2020 - 01/2021	86,134	\$328,859	City of Carencro - Don Chauvin, City Manager P.O.Drawer 10, 210 East St Peter St, Carencro, LA 70520 CityManager@carencro.org (337)896-8481
Ice Storm Cleanup City of Saraland, Alabama	10/2020 - 12/2020	37,378	\$243,432	City of Saraland - Judi Smith, City Clerk 943 Saraland Blvd South, Saraland, AL 36571 JSmith@saraland.org (251)679-5560
Ice Storm Cleanup Oklahoma City, Oklahoma	11/2020 - 02/2021	67,291	\$6,385,273	Oklahoma City - Jim Linn, Superintendent, Solid Waste Mgt. 100 N. Wakjer Ave, Oklahoma City, OK 73102 Jim.Linn@okc.gov (405)297-2833
Hurricane Florence Flooding Military Ocean Terminal Sunny Point, Brunswick County, NC	10/2018 – 1/2019	Time & Materials	\$3,833,725	Tim Gouger, USACE, Contracting Officer 1616 Capitol Ave, Omaha, NE 68102 (402)216-4252 / Timothy.P.Gouger@usace.army.mil
Emergency Slide Repairs – Hwy 9 Henderson County, NC	12/2018-1/2019	162,458	\$1,519,886	Mitchell Bishop, NCDOT, Contract Engineer 253 Webster Road, Sylva, NC 28779 (828)631-1143 / JMBishop@ncdot.gov
Santa Barbara County Floods Emergency Debris Removal	1/2018-4/2018	172,408 + Time & Materials	\$9,447,518	James Costantino, Contracting Officer, USACE 7400 Leake Ave, New Orleans, LA 70118 (213)452-3237 / James.M.Costantino@usace.army.mil
Emergency Slide – Highway 28 NC	4/2018 – 5/2018	26,937	\$1,260,148	Brian Burch, Contract Engineer, NCDOT 253 Webster Road, Sylva, NC 28779 (828)361-3241 / BrianBurch@NCDOT.GOV
Louisiana Flood Recovery Vermillion Parish, LA	9/2016-10-2016	23,842	\$230,000	Jim Garner, Contract Administrator, USACE 100 N. State Street, Abbeville, LA 70510 (601)618-7777 / JANDL284@gmail.com
West Virginia Flood Recovery – Nicholas County, WV	7/2016-8/2016	8,000	\$70,300	Patty Neff, Commission Administrator, Nicholas County 700 Main Street, Summersville, WV 26651 (304)872-7830/ncc_pattyneff@yahoo.com

Any of the above can be contacted for respective projects



MAYOR GLENN L. BRASSEAU

**COUNCILMAN JORDAN ARCENEUX | COUNCILMAN ANTOINE BABINEUX | COUNCILWOMAN DANIELLE CAPRITTO
COUNCILWOMAN KIM GUIDRY | COUNCILMAN ALFRED SINEGAL**

March 16, 2021

RE: Reference letter – Graham County Land Co. - Disaster Debris Management

To Whom It May Concern,

In September 2020, we initiated a Disaster Debris Management Request for Proposals with a bid opening date of October 8, 2020. On October 9, at 11:00 p.m. Hurricane Delta made landfall in Louisiana.

Graham County Land Co. (GCLC) was selected after a rigorous bid review and the contract was executed on October 20, 2020. Remarkably, six days later (GCLC) arrived in Carencro and immediately began debris removal picking up 8327 cubic yards in the first week while things were still a bit chaotic. Our debris staging location was located within a secure wastewater facility and GCLC had no problem managing site security.

GCLC also worked flawlessly with a third-party monitoring company that photographed and validated each load. During this process, residents continued making new debris piles which were picked up promptly. Safety is always first and no accidents or injuries were reported from start to finish when the debris was properly burned and the site restored.

In closing, I'm extremely satisfied with the professionalism of the GCLC team.

Sincerely,

Don Chauvin | City Manager
Certified Floodplain Manager
City of Carencro
P.O. Drawer 10
Carencro, LA 70520



Town of Beaufort NC

701 Front St. • P.O. Box 390 • Beaufort, N.C. 28516
252-728-2141 • 252-728-3982 fax • www.beaufortnc.org

July 19, 2019

**Mr. Drew Silvers
Graham County Land Company LLC
750 Tallulah Road
Robbinsville Nc, 28771**

Mr. Silvers,

I would like to thank you on behalf of the Town of Beaufort for the storm vegetative debris grinding and removal from our disaster site. Your company had top of the line equipment and was resourceful in disposal processes which in return reduced the towns expense of disposal of our material. Your field crew was efficient in the work that was performed, and the administrative portion was also tactful and prompt in their completion of invoicing and turn around. Thank you again for the work your team did for the town and we look forward to possibly working with you again.

Thanks,

**Mark Eakes
Public Works Director
Town of Beaufort
m.eakes@beaufortnc.org
252-728-7166**



Project Name:	Military Ocean Terminal Sunny Point (MOTSU)
Name of Contracting Agency:	USACE
Contact Name:	Tim Gouger
Specific Role/Title:	Contracting Officer
Mailing Address:	1616 Capitol Ave, Omaha, NE 68102-4901
Phone Number:	402-216-4252
Email Address:	Timothy.P.Gouger@usace.army.mil
Contract #:	W9128F-14-D-0024
Task Order #:	0004, 0005, 0010, 0012, 0013
Percentage Complete:	100%
Total Amount of Contract:	\$3,833,725.80
Project Experience:	Graham County Land Company, LLC was subcontracted by Weston Solutions to assist with the time critical repairs of five damaged infrastructures located at the Military Ocean Terminal Sunny Point (MOTSU) in Brunswick County, NC resulting from Hurricane Florence Flooding. On both the Center and North Wharf, repairs included replacement of damaged fire protection lines. On the Wharf Embankment, repairs were made to the damaged section of an earthen embankment. On the Landbridge site, a severely damaged embankment was repaired with rip-rap placed to protect the bank. On Brunswick Road, repairs were to the scoured sections of the road and shoulder which contains asbestos water pipe and guardrail.
Project Role:	Subcontracted by Weston Solutions

Site Photos



Vermillion Parish Flood Recovery		
Name of Contracting Agency:	Vermillion Parish	
Contracting Officer Name:	Jim Garner	Response Time: Less than 48hrs. of Notice
Telephone #:	601-618-7777	
Email Address:	JANDL284@gmail.com	
Contract #:	6016040	
Description of Services:	GCL was contracted by Vermillion Parish for the recovery mission after a flood topped its banks and flooded a portion of Parish. Scopes of work completed successful included ROW Debris Removal and disposal.	
Quality of Service and Customer Satisfaction:	The GCL team went above and beyond to meet the demands of the mission and completed the job on time and within budget.	
Performance Period:	September 2016 - October 2016	
Total Amount of Contract:	\$234,619	
Address:	100 N. State St., Suite 200, Abbeville, LA, 70510	
Fax #:	337-898-4310	
Cubic Yards Collected:	32,361 CY	
Site Photos		
		



VERMILION PARISH POLICE JURY

Courthouse Bldg.
100 N. State St., Suite 200
Abbeville, Louisiana 70510



PH: 337-898-4300 • FAX: 337-898-4310 • www.vermilionparishpolicejury.com

RONALD DARBY
PRESIDENT

PERVIS GASPARD
VICE PRESIDENT

LINDA DUHON
PARISH ADMINISTRATOR

MEMBERS

DISTRICT 1
DANE HEBERT

DISTRICT 2
JASON PICARD

DISTRICT 3
BRENT LANDRY

DISTRICT 4
RONALD DARBY

DISTRICT 5
WAYNE TOUCHET

DISTRICT 6
MARK POCHÉ

DISTRICT 7
PAUL BOURGEOIS

DISTRICT 8
ERROL J. DOMINGUES

DISTRICT 9
KEVIN SAGRERA

DISTRICT 10
RONALD MENARD

DISTRICT 11
PERVIS GASPARD

DISTRICT 12
CLORIS J. BOUDREAUX

DISTRICT 13
SANDRUS STELLY

DISTRICT 14
LEON BROUSSARD



February 08, 2017

Mr. Jimmy Griffin
Graham County Land Company
750 Tallulah Road
Robbinsville, NC 28771

RE: Letter of Recommendation

To Mr. Griffin:


In action taken at their February 06, 2017, meeting, the Vermilion Parish Police Jury went on record stating that Graham County Land Company performed an excellent job on debris removal for the most recent storm event on August 2016.

Should you have any questions, or need additional information, please feel free to call on us.

Very truly yours,

Linda Duhon
Parish Administrator

LLD/pmp

Nicholas County, WV Flood Recovery		
Name of Contracting Agency:	Nicholas County, WV	
Contracting Officer Name:	Patty Neff	Response Time: Less than 48hrs. of Notice
Telephone #:	304-872-7830	
Email Address:	ncc_pattyneff@yahoo.com	
Contract #:	6016033	
Description of Services:	GCL was contracted by Nicholas for the recovery mission after a flood topped its banks and flooded a large portion of County. Scopes of work completed successful included ROW Debris Removal and disposal.	
Quality of Service and Customer Satisfaction:	The GCL team went above and beyond to meet the demands of the mission and completed the job on time and within budget.	
Performance Period:	July 2016 - August 2016	
Total Amount of Contract:	\$70,357	
Address:	700 Main Street, Suite 1, Summersville, WV, 26651	
Fax #:	304-872-9602	
Cubic Yards Collected:	9,704 CY	
Site Photos		
		



NICHOLAS COUNTY COMMISSION

700 MAIN STREET, SUITE 1
SUMMERSVILLE, WEST VIRGINIA 26651
ncc_pattyneff@yahoo.com
www.nicholascountywv.org

KEN ALTIZER, President
LYLE NEAL, Commissioner
DR. LLOYD K. ADKINS, Commissioner

TELEPHONE: (304) 872-7830
FAX: (304) 872-9602

February 1, 2017

TO WHOM IT MAY CONCERN:

We have no hesitancy whatsoever in recommending Graham County Land Company, LLC., for future jobs in the disaster response area.

Our staff became acquainted with the employees of this company, while Nicholas County was attempting to recover from a devastating flood we experienced on June 23, 2016. Graham County Land Company, LLC received the bid for curb side debris removal. We found their team to be dedicated, professional and cooperative at all times. They were here to get the job done and that is what they accomplished.

If we may be of further assistance, please feel free to contact us.

Sincerely,


Ken Altizer, President

4