

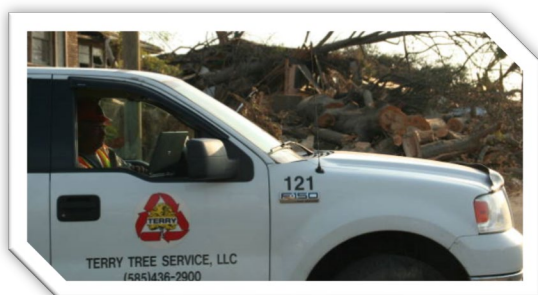


Terry Tree Service, LLC

755 Jefferson Rd, Suite 200
Rochester, NY 14623-1907
Phone (585) 436-2900 • Fax (585) 783-1209
www.terrytree.com

July 16, 2021

RFP: Disaster Debris Removal and Disposal Services Franklin County, Florida



Chief Executive Officer

Tim Pope
(585) 436-2900 Ext. 150
tpope@terrytree.com

Operations Manager

Kim Wilson
(931) 703-2139
kwilson@terrytree.com



Terry Tree Service, LLC

755 Jefferson Rd, Suite 200
Rochester, NY 14623-1907
Phone (585) 436-2900 • Fax (585) 783-1209
www.terrytree.com

Disaster Debris Removal and Disposal Services

Franklin County, Florida

[THIS PAGE IS INTENTIONALLY LEFT BLANK]



Table of Contents

GLOSSARY OF TERMS	4
TAB A: STATEMENT OF INTEREST AND INTRODUCTION.....	5
Statement of interest and introduction to submittal	6
TAB B: EXPERIENCE	7
History	8
Relevant Projects Within Past Five (5) Years	9
Successful Relief Efforts – 25 Years of Experience.....	11
TAB C: FINANCIAL INFORMATION.....	13
Certified Financial Statement	14
TAB D: REFERENCES	15
TAB E: PROPOSAL MATRIX.....	19
Description of Project Approach.....	20
Organizational Chart – Key People	29
List of Equipment	35
TAB F: LICENSES	37
TAB G: INSURANCES.....	39
Sample Insurance Certificate	40
TAB H: REQUIRED DOCUMENTS	41
Proposal Submittal Checklist	42
Proposer’s Certification Form	43
Addendum Acknowledgement	44
Drug Free Workplace	45
Sworn Statement on Public Entity Crimes	46
Affidavit of Non-Collusion and of Non-Interest of Entity’s Employee	48
Professional References.....	49
MWBE Participation Statement.....	50
Vendor Information	51
W-9 Form	52
Unit Cost Fee Rate Schedule	53



Terry Tree Service, LLC

755 Jefferson Rd, Suite 200
Rochester, NY 14623-1907
Phone (585) 436-2900 • Fax (585) 783-1209
www.terrytree.com

Disaster Debris Removal and Disposal Services

Franklin County, Florida

GLOSSARY OF TERMS

County	Franklin County, Florida
C&D	Construction and Demolition Debris
DBE	Disadvantaged Business Enterprise
DMC	Debris Monitoring Contractor
E-Waste	Electronic Waste
EMR	Employer Modification Rate
EPA	Environmental Protection Agency
ES&H	Environmental, Safety and Health
FDEM	Florida Division of Emergency Management
FEMA	Federal Emergency Management Agency
FHWA	Federal Highway Administration
HAZMAT	Hazardous Materials
HHW	Household Hazardous Waste
IHH	Ironwood Heavy Highway, LLC
MBE	Minority-Owned Business Enterprise
NTP	Notice to Proceed
OSHA	Occupational Safety and Health Administration
PPE	Personal Protective Equipment
QC	Quality Control
ROW	Right-of-Way
SDB	Small Disadvantaged Business
SWPPP	Storm Water Pollution Prevention Plan
TDSRS	Temporary Debris Staging and Reduction Site
TTS	Terry Tree Service, LLC
USACE	US Army Corps of Engineers
VO	Veteran-Owned Business
VOC	Volatile Organic Compounds
WBE	Woman-Owned Business Enterprise



Terry Tree Service, LLC

755 Jefferson Rd, Suite 200
Rochester, NY 14623-1907
Phone (585) 436-2900 • Fax (585) 783-1209
www.terrytree.com

Disaster Debris Removal and Disposal Services

Franklin County, Florida

TAB A: STATEMENT OF INTEREST AND INTRODUCTION

[THE REMAINDER OF THIS PAGE IS INTENTIONALLY LEFT BLANK]



Terry Tree Service, LLC

755 Jefferson Rd, Suite 200
Rochester, NY 14623-1907
Phone (585) 436-2900 • Fax (585) 783-1209
www.terrytree.com

Disaster Debris Removal and Disposal Services

Franklin County, Florida

Terry Tree Service, LLC
755 Jefferson Road, Suite 200, Rochester, NY 14623-1907
Phone (585) 235-1125 • Fax (585) 783-1209

July 15, 2021

Franklin County Clerk of Courts
33 Market Street, Suite 203
Apalachicola, Florida 32320

Attn.: Jessica Gay

Re.: Request for Proposal – Disaster Debris Removal and Disposal Services

Ms. Gay,

Terry Tree Service, LLC (TTS) appreciates the opportunity to provide Franklin County, Florida (County) with a Pre-Positioned Bid Proposal for **DISASTER DEBRIS REMOVAL AND DISPOSAL SERVICES**.

After thorough review of the RFP, TTS acknowledges that we understand the work outlined within. We are committed to meeting and/or exceeding every expectation set forth by the County, on or before the expected timeline.

TTS brings over 25 years of Disaster Debris Removal and Management experience. As with any disaster response, selecting the right contractor is a crucial first step. The County should not make this decision hastily and should take into consideration several key factors – experience, a strong safety record, reliability, and the ability to maximize the County's reimbursement from the Federal Emergency Management Agency (FEMA).

Throughout our 25+ years, TTS has responded to over 30 major storm events, moving hundreds of thousands of tons of debris. Our safety record is no accident and is always our top priority. TTS has never defaulted on or failed to complete a contract. Countless times we have helped our clients navigate the challenges associated with receiving maximum FEMA reimbursements. We've handled this through strict adherence to all work guidelines, a coordinated effort with our client's primary contacts and designated representatives, and a diligent record keeping system.

Enclosed is a firm and irrevocable offer to Franklin County, Florida.

Sincerely,

Timothy J Pope
Chief Executive Officer



Terry Tree Service, LLC

755 Jefferson Rd, Suite 200
Rochester, NY 14623-1907
Phone (585) 436-2900 • Fax (585) 783-1209
www.terrytree.com

Disaster Debris Removal and Disposal Services

Franklin County, Florida

TAB B: EXPERIENCE

[THE REMAINDER OF THIS PAGE IS INTENTIONALLY LEFT BLANK]



Terry Tree Service, LLC

755 Jefferson Rd, Suite 200
Rochester, NY 14623-1907
Phone (585) 436-2900 • Fax (585) 783-1209
www.terrytree.com

Disaster Debris Removal and Disposal Services

Franklin County, Florida

Terry Tree Service, LLC (TTS) is a third generation privately owned company, with its roots in Rochester, NY dating back to 1936. Shortly after the Great Depression, Thomas Terry, Sr. founded TTS with the guiding principles that the residents of Rochester needed quality, reliable and affordable tree care services.



Today, Terry Tree Service, LLC is owned by Thomas Terry, Sr.'s grandson, Thomas "Tommy" Terry, III and his partner Timothy Pope. Seeing an opportunity to expand their service offerings, TTS's Disaster Recovery efforts began with Hurricane Irma in 1996. 25 years later, TTS has responded to over 30 natural disasters, moving hundreds of thousands of tons of debris, throughout the United States – including Hurricane Katrina in Louisiana (2005 – 2007), the Super Tornado Outbreak in Alabama (2011), and the Wildfires in California (2015 – 2016).

In 2003 Tommy and Tim looked to again expand on their success with TTS and move into new markets, which saw the formation Ironwood Heavy Highway, LLC (IHH).

IHH's primary focus is on civil, utility, restoration and roadway construction.

From its inception, TTS's greatest asset has been their employees. Together with IHH, TTS and affiliates employ over 250 full-time employees.

Like any successful enterprise, TTS has made the safety of its employees and contractors the top priority. Boasting an ISNetworld rating of A and Employer Modification Rate (EMR) rate of 0.65 – "Our safety record is no accident."

With a fleet of over 400 pieces of equipment, TTS and affiliates maintain an in-house maintenance crew, as well as having strong relationships with national vendors, allowing for quick and easy access to rent or acquire equipment at a moment's notice.



In 2013, TTS & IHH were recognized as the #1 company in the Rochester Top 100 by the Rochester Chamber of Commerce. In 2020, we were awarded the #3 spot. This is a huge honor for any company and is based on several factors – most importantly revenue growth from year to year. As a result of this growth coupled with our history of success, we have seen our bond capacity rise to \$100 Million.



TTS will meet and/or exceed all the program standards as outlined in FEMA-325 / July 2007 "Debris Management Guide."

TTS holds itself to the highest ethical standards, adheres to fair employment practices, and complies with all local, state and federal regulations. Whenever possible, TTS utilizes local Disadvantaged Business Enterprises (DBE), Small Disadvantaged Businesses (SDB), Minority-Owned Business Enterprises (MBE), Veteran-Owned Businesses (VO) and Women-Owned Business Enterprises (WBE).

For 25 years, Terry Tree Service, LLC has made its name on providing reliable, quality disaster relief efforts throughout the country. We look forward to continuing that success as the contractor of choice for Franklin County.



Relevant Projects Within Past Five (5) Years

Virginia Ice Storm – Various Counties, Virginia: 2020 – 2021

Type: Ice Storm

Value: \$3,810,718

Primary Contact: Phillips & Jordan (Prime Contractor) and VDOT (Contract)

Description: Due to the nature of the storm, most of the work consisted of cutting hazardous trees and limbs. Once cut, vegetative debris was hauled to a Temporary Debris Staging and Reduction Site. Hauled 357,210 cubic yards. Debris was reduced via grinding and then hauled to the final disposal site.

NYSDOT Emergency Debris Removal – Lodi, New York: 2018

Type: Flood

Value: \$1,149,800

Primary Contact:

Description: Hauled 13,000 tons

Hurricane Irma – Highlands County, Florida: 2017

Type: Hurricane

Value: \$8,675,320

Primary Contact: Clinton Howerton, Jr.

Description: Very large storm cleanup effort, that consisted of cutting of hazardous limbs, trees, and stumps. All vegetative and C&D was hauled to a Temporary Debris Staging and Reduction Site for processing. A total of 852,620 cubic yards was hauled. Debris was reduced via grinding and burning.

Hurricane Matthew – Horry County, South Carolina: 2017

Type: Hurricane

Value: \$1,135,205

Primary Contact: Mike Bessant, Horry County Solid Waste Authority, Inc.

Description: Cleanup consisted of cutting hazardous trees and limbs. Once cut, vegetative debris was hauled to a Temporary Debris Staging and Reduction Site. Hauled a total of 162,172 cubic yards. Debris was reduced via grinding and then hauled to the final disposal site.



Terry Tree Service, LLC

755 Jefferson Rd, Suite 200
Rochester, NY 14623-1907
Phone (585) 436-2900 • Fax (585) 783-1209
www.terrytree.com

Disaster Debris Removal and Disposal Services

Franklin County, Florida

San Andreas Wildfires – San Andreas, California: 2015 – 2016

Type: Wildfire

Value: \$5,949,735

Primary Contact: Phillips & Jordan (Prime Contractor) and PGE (Contract)

Description: Our primary duties for this relief effort consisted of cutting hazardous limbs, trees, and stumps along power lines and the Right-of-Way (ROW). We utilized both climbing crews and felling crews. Vegetative debris was ground on-site and blown off the ROW.



Successful Relief Efforts – 25 Years of Experience

Virginia Ice Storm

Various Counties, Virginia
2021

Lodi Flash Flood

Lodi, New York
2018

Hurricane Irma

Highlands County, Florida
2017

Hurricane Matthew

Horry County, South Carolina
2017

San Andreas Wildfires

San Andreas, California
2015 – 2016

Houston Flooding

Houston, Texas
2015

Van Zandt Tornado

Van Zandt County, Texas
2015

November Snowstorm

Buffalo, New York
2014

Barnwell Tornado

Barnwell County, South Carolina
2014

Super Storm Sandy

New York, New York
2012

2011 Ice Storm

Granby, Connecticut
2011

Hurricane Irene

New York, New York & Norfolk,
Virginia
2011

Tornado Outbreak

Joplin, Missouri
2011

Super Tornado Outbreak

Tuscaloosa, Alabama
2011

Emergency Ice Storm Removal

District 2, Kentucky
2009

Kentucky Ice Storm

Various Counties, Kentucky
2009

Levee Debris Removal

Plaquemines Parish, Louisiana
2008

Hurricane Ike

Harris County, Texas & Avoyelles
Parish, Louisiana
2008

Versailles Ice Storm

Versailles, Missouri
2008

**North American Mid-December
Ice Storm**

Oklahoma City, Oklahoma
2007

North American Ice Storm

Muskogee, Oklahoma
2007

Friday the 13th Snowstorm

Buffalo, New York
2006

Hurricane Rita

Texas & Louisiana
2005

Hurricane Katrina

New Orleans, Louisiana &
Mobile, Alabama
2005 – 2007

Hurricane Wilma

W. Palm Beach, Florida
2005

Hurricane Ivan

Mobile, Alabama
2004

Hurricane Charlie

Daytona Beach, Florida
2004

1998 Great Ice Storm

New England
1998

Hurricane Fran

North Carolina
1996

The Flint-Beecher Tornado

Detroit, Michigan
1996



Terry Tree Service, LLC

755 Jefferson Rd, Suite 200
Rochester, NY 14623-1907
Phone (585) 436-2900 • Fax (585) 783-1209
www.terrytree.com

Disaster Debris Removal and Disposal Services

Franklin County, Florida

[THIS PAGE IS INTENTIONALLY LEFT BLANK]



Terry Tree Service, LLC

755 Jefferson Rd, Suite 200
Rochester, NY 14623-1907
Phone (585) 436-2900 • Fax (585) 783-1209
www.terrytree.com

Disaster Debris Removal and Disposal Services

Franklin County, Florida

TAB C: FINANCIAL INFORMATION

[THE REMAINDER OF THIS PAGE IS INTENTIONALLY LEFT BLANK]



Terry Tree Service, LLC

755 Jefferson Rd, Suite 200
Rochester, NY 14623-1907
Phone (585) 436-2900 • Fax (585) 783-1209
www.terrytree.com

Disaster Debris Removal and Disposal Services

Franklin County, Florida

Terry Tree Service, LLC (TTS) will provide the County a Certified Financial Statement upon request.



Terry Tree Service, LLC

755 Jefferson Rd, Suite 200
Rochester, NY 14623-1907
Phone (585) 436-2900 • Fax (585) 783-1209
www.terrytree.com

Disaster Debris Removal and Disposal Services

Franklin County, Florida

TAB D: REFERENCES

[THE REMAINDER OF THIS PAGE IS INTENTIONALLY LEFT BLANK]



Terry Tree Service, LLC

755 Jefferson Rd, Suite 200
Rochester, NY 14623-1907
Phone (585) 436-2900 • Fax (585) 783-1209
www.terrytree.com

Disaster Debris Removal and Disposal Services

Franklin County, Florida



HIGHLANDS COUNTY

BOARD OF COUNTY COMMISSIONERS

ENGINEERING DEPARTMENT

October 14, 2018

To whom it may concern:

RE: Terry Tree Service LLC – Post Storm Debris Removal Service

Immediately following the impact of Hurricane Irma in 2017, Terry Tree Service LLC was hired as a subcontractor to provide storm debris collection service. Terry Tree Service LLC provided excellent service and proved instrumental in the recovery effort in Highlands County where over 900,000 cubic yards of material was collected in approximately 90 days. Terry Tree also provided the Debris Management Site management to dispose of the material being collected at 3 key locations throughout the County and worked well with the monitoring agency hired to provide the reporting for the effort.

The crews were responsive, knowledgeable, and a key part of our local post-storm recovery. Management communicated very well with our staff during frequent meetings and daily phone communication which was critical for the flow of information from our call centers to the crews in the field.

Although I would hope the services are not needed by any agencies, reality is that hurricanes are a factor we have to deal with in Florida and the Southeast. I would highly recommend this organization for post-hurricane debris removal service.

If you have any questions or would like any additional information, please call 863-402-6877 or email chowerton@hcbcc.org.

Sincerely,

Clinton Howerton, Jr. P.E.
County Engineer

505 S. Commerce Ave., Sebring, Florida 33870-3869
Fax (863) 402-6548
Phone (863) 402-6877
www.hcbcc.net



Terry Tree Service, LLC

755 Jefferson Rd, Suite 200
Rochester, NY 14623-1907
Phone (585) 436-2900 • Fax (585) 783-1209
www.terrytree.com

Disaster Debris Removal and Disposal Services

Franklin County, Florida



Michael H. Hughes
Chairman

Bo Ives
Vice-Chairman

J. Michael Campbell
Secretary

Pam J. Creech
Treasurer

Samuel T. Johnson, Jr.

W. Norfleet Jones

Carl H. Schwartzkopf

Danny Knight
Executive Director

Horry County Solid Waste Authority, Inc.

"Protecting Tomorrow's Environment Today"

March 9, 2020

To Whom It May Concern:

Terry's Tree Service provided Horry County with disaster debris removal after Hurricane Florence. They did an outstanding job and we were impressed with their level of service.

If you have any questions, please do not hesitate to call.

Thank you,

Mike Bessant
Director of Operations

Post Office Box 1664
Conway, South Carolina
29528-1664
Tel: 843-347-1631
Fax: 843-347-4654

Printed on Recycled Paper



Terry Tree Service, LLC

755 Jefferson Rd, Suite 200
Rochester, NY 14623-1907
Phone (585) 436-2900 • Fax (585) 783-1209
www.terrytree.com

Disaster Debris Removal and Disposal Services

Franklin County, Florida



LOVIN
Contracting Company, Inc.

Phone (828) 479-9462 Fax (828) 479-6544
PO Box 758 • 937 Tallulah Road
Robbinsville, NC 28771

To Whom It May Concern:

Please accept this letter of recommendation for Terry Tree Service, LLC and Project Manager Kim Wilson. I have had the pleasure to work on several projects with this team including, City of Buffalo Snow Storm of 2006, Muskogee Ice Storm of 2007, Oklahoma Ice Storm of 2008, Kentucky Ice Storm of 2009, BP Oil Spill of 2010 and the Alabama Tornadoes of 2011. I have always found Terry Tree Service, LLC and Kim Wilson to be professional, reliable and able to perform at a high level. Their willingness to get the job done safely and efficiently is impeccable. They have proven to be one of the best in the debris removal business. I highly recommend this team for any and all debris management projects.

Respectfully,

Mitch Beasley
Chief Operating Officer
Lovin Contracting Company, Inc.



Terry Tree Service, LLC

755 Jefferson Rd, Suite 200
Rochester, NY 14623-1907
Phone (585) 436-2900 • Fax (585) 783-1209
www.terrytree.com

Disaster Debris Removal and Disposal Services

Franklin County, Florida

TAB E: PROPOSAL MATRIX

[THE REMAINDER OF THIS PAGE IS INTENTIONALLY LEFT BLANK]



Terry Tree Service, LLC

755 Jefferson Rd, Suite 200
Rochester, NY 14623-1907
Phone (585) 436-2900 • Fax (585) 783-1209
www.terrytree.com

Disaster Debris Removal and Disposal Services

Franklin County, Florida

Terry Tree Service, LLC (TTS) has been providing Disaster Removal and Recovery services for over 25 years. We are committed to assisting Franklin County (County) return to pre-disaster conditions quickly and effectively, while receiving maximum reimbursement through Federal, State and Local reimbursement initiatives.

We understand that every disaster provides its own unique challenges and may differ quite a bit based on type of event, magnitude, and duration. Each one of these factors will have an impact on how we handle the storm, but our standard approach remains the same. The following steps outline how TTS will approach Disaster Removal and Recovery efforts for the County.

Pre-Event Preparation:

The first step to any successful disaster recovery and removal service begins with careful planning and preparation. As Benjamin Franklin said, “Failing to prepare, is preparing to fail.” Throughout our contract TTS will be taking to steps to prepare ourselves and the County should a disaster event occur. There are two primary classifications of events – those that can be forecasted or anticipated (within reason), such as Hurricane, Flood, Tornado, etc.; and those that cannot be anticipated or happen unexpectedly, such as a terror attack, wildfire, or earthquake. In either scenario TTS takes the following steps to prepare:

- Training of TTS and County employees. Training will be offered to County employees throughout the term of the contract pro bono publico.
- Open lines of communication between TTS and County Leadership.
- Evaluation and selection of potential sub-contractors.
- Continuous maintenance and upkeep of equipment.
- Selection of Debris Management and Disposal Sites, if requested by County Leadership.
- Identification of zones, and planning of routes.
- Continuous monitoring of weather patterns and forecasting of potential disaster events that could impact the County.

Prior to the beginning of each Hurricane Season, TTS will meet with the County and the Debris Monitoring Contractor (DMC) to finalize and test the processes for inspection and documentation that are to be used during the response and recovery phase. This will be an annual meeting.

Once a disaster event is identified, and impact on the county is imminent, TTS will take the following steps:

- Notify County Leadership of potential disaster event.
- Reach out to sub-contractors to assess their readiness and/or ability to respond as needed.
- Preposition equipment, employees, and sub-contractors just outside of the anticipated disaster impact zone.

For an “Event Type” that requires Temporary Debris Staging and Reduction Sites (TDSRS), TTS will be available for technical assistance to determine which pre-determined TDSRS will be used. Selection of these sites will be the first task completed by the Debris Management Team, which is comprised of



Terry Tree Service, LLC

755 Jefferson Rd, Suite 200
Rochester, NY 14623-1907
Phone (585) 436-2900 • Fax (585) 783-1209
www.terrytree.com

Disaster Debris Removal and Disposal Services

Franklin County, Florida

leadership from the County's, the DMC, and TTS. Once this is complete, the result will be a map of the various sites and basic operation plan for each site.

Potential Disaster Scenarios:

Under the Disaster Debris Removal & Disposal Services Contract, there are several scenarios or "Event Types" that may occur. They are loosely defined below. Given that a disaster event can widely vary, the actual event may be a combination of events described.

Event Type 1 – Spot Jobs, Localized

TTS may be called upon to provide removal, hauling, and/or reduction by chain saw of localized woody debris. The work will most likely be assisting the government resources.

Event Type 2 – Widespread or City/County Wide

TTS will provide all necessary supervision, labor, and all equipment to clear, remove, haul, recycle, and/or dispose of all types of debris with our own resources, with the exception that government land may be used for temporary storage. If government land is used, following the event and work it will be reclaimed to as close to pre-event status as possible. In this event type, burning operations would not be necessary.

Event Type 3 – Significant Event – Removal, Reduction, Hauling – Woody Debris only – Widespread or City/County Wide

TTS will provide all necessary supervision, labor, and all equipment to remove, reduce, and haul woody debris to a disposal site designated by a government agency or contractor. In this event type, the development and operation of a TDSRS may be necessary. If government land is used, following the event and work it will be reclaimed to as close to pre-event status as possible.

Event Type 4 – Significant Event – Removal, Reduction, Hauling, and Separating – Mixed Debris – Widespread or City/County Wide

TTS will provide all necessary supervision, labor, and all equipment to remove, reduce, and haul mixed debris to a recycling and disposal site(s) designated by a government agency or contractor. In this event type, the development and operation of a TDSRS may be necessary. If government land is used, following the event and work it will be reclaimed to as close to pre-event status as possible.

Event Type 5 – Catastrophic Event – Removal, Reduction, Hauling, and Separating – Mixed Debris – City/County Wide

TTS will provide all necessary supervision, labor, and all equipment to remove, reduce, recycle, and haul mixed debris to multiple disposal sites designated by a government agency or contractor. In this event type, the development and operation of a TDSRS may be necessary. If government land is used, following the event and work it will be reclaimed to as close to pre-event status as possible.

Event Type 6 – Catastrophic Event Site Management – City/County Wide

**Terry Tree Service, LLC**

755 Jefferson Rd, Suite 200
Rochester, NY 14623-1907
Phone (585) 436-2900 • Fax (585) 783-1209
www.terrytree.com

Disaster Debris Removal and Disposal Services**Franklin County, Florida**

TTS will plan, set up, mobilize equipment, manage, operate, and close out one or more mixed TDSRS's City/County Wide, including burn operations. TTS will be responsible for all traffic control, weighing, measuring, reduction, recycling and all other necessary operations for the operation of sites, throughout the close out of the sites. TTS will obtain permits in the name of the government agency. If government land is used, following the event and work it will be reclaimed to as close to pre-event status as possible.

Assessment and Push Phase:

Within 24 hours of the disaster event and receipt of the Notice to Proceed (NTP), TTS Leadership will begin its recovery efforts. This will include assisting the County, if requested, with the initial assessment of the damage. During this time TTS will bring what is known as the Push phase. This is a crucial step to clear the Right of Way (ROW) to allow for emergency vehicles, utility crews, and load and haul crews to begin clearing the debris. Any debris that is blocking the ROW, will be reduced, and moved to the side of the ROW so crews can advance. If requested by the County, TTS and its sub-contractors will assist emergency crews with search and rescue efforts.

Vehicle Check-In / Registration:

Working in conjunction with the DMC, and the County, an initial staging area will be selected and established. All vehicles will be inspected for the following information:

- Truck Owner
- Truck Type
- VIN #
- Make / Model
- Color
- Year
- Safety Information: Headlights, Signals, Tire Condition, Brake Lights, Backup Alarm, Sideboards, and Insurance Card
- Driver's Name
- Driver's License Number
- Driver's License Class

Once inspected, the truck will be appropriately documented, the load capacity will be measured, and the truck will be labeled with the following information:

- Contractor / Sub-Contractor Name
- Truck Number
- Truck Bed Load Capacity

Hazardous Tree, Limb and Stump Removal:

Immediately following the Push Phase, tree trimming crews will be utilized to address hazardous trees, limbs and stumps that are a risk to the safety of the public. All hazardous trees, limbs and stumps will be reviewed by the DMC to ensure that they meet all requirements for Federal Emergency Management



Terry Tree Service, LLC

755 Jefferson Rd, Suite 200
Rochester, NY 14623-1907
Phone (585) 436-2900 • Fax (585) 783-1209
www.terrytree.com

Disaster Debris Removal and Disposal Services

Franklin County, Florida

Agency (FEMA) reimbursement. All eligible trees, limbs and stumps will be cut and placed on the edge of the ROW for collection and transportation by Debris Removal Crews to the Temporary Debris Staging and Reduction Site (TDSRS).

Debris Segregation:

Segregating debris by type is a critical early step taken by TTS. There are several types of debris that may be encountered following a disaster event, including, but not limited to:

- *Vegetative Debris* — Brush, logs, trees, limbs, stumps, leaves, etc.
 - Vegetative Debris will be cut, trimmed, and pushed to the side of the ROW. Eligible debris will be located on either the Public ROW or on Public Property. Vegetative Debris located on Private Property will only be collected if given prior approval from the County Leadership. Once segregated it will either be taken to the designated storage area within TDSRS for further reduction and/or recycling or taken to the final disposal site.
- *Construction and Demolition (C&D) Debris* – Building materials, lumber, carpet, furniture, etc.
 - Recyclable material, such as metals, certain plastics, etc. will be sorted from C&D Debris and recycled accordingly. Once collected it will be transported to designated staging area within TDSRS to be measured, documented, reduced/recycled, and transported to final disposal site.
- *Household Hazardous Waste (HHW)* – batteries, paint, cleaning supplies, oil/gas, etc.
 - All collection of HHW will be done by properly trained personnel. They will be outfitted with all required Personal Protective Equipment (PPE). HHW will be placed in spill proof containers and transported to designated disposal/recycling facilities.
- *White Goods* – Washers, Dryers, Refrigerators, Lawn Mowers, etc.
 - All White Goods will be collected by properly trained personnel. All freon will be removed in accordance with Federal, State, and Local standards, and regulations. Once collected, White Goods will be transported to designated staging area within TDSRS or taken directly to recycler.
- *Electronic Waste (E-Waste)* – Computers, Televisions, telephones, etc.
 - Whenever possible, E-Waste will be collected and recycled according to Federal, State, and Local standards and regulations. If necessary, E-Waste will be transported to designated staging area within TDSRS.
- *Animal Carcasses*
 - At the request of the County, Animal Carcasses located in the Public ROW or on Public Property will be collected and disposed of according to Federal, State, and Local standards and regulations.
- *Abandoned Vehicles*
 - At the guidance of the County, eligible Abandoned Vehicles will be transported to the County's approved staging area.
- *Canals, Streams and Conservation Areas*
 - TTS will coordinate with the appropriate Federal, State and Local agencies with jurisdictional authority to remove debris in natural or manmade waterways.



Terry Tree Service, LLC

755 Jefferson Rd, Suite 200
Rochester, NY 14623-1907
Phone (585) 436-2900 • Fax (585) 783-1209
www.terrytree.com

Disaster Debris Removal and Disposal Services

Franklin County, Florida

Any ruts created by equipment, or holes created by stump removal will be filled appropriately with compacted fill at the direction of the County.

Debris Collection:

Under the direction of the dedicated Project Manager, crews will be assembled to begin debris collection. Each crew will be assigned to a specific zone, with a pre-determined route to maximize efficiency and production rates. Zones will be given priority preference based on the needs of the County.

The project Manager, DMC and the County will determine the number of passes required, based on initial assessment of the damage. The public will be notified of when debris will be collected, how many passes will be made in their area, and where their debris should be placed for collection. If requested, TTS can assist the County in notification efforts, including but not limited to, distribution of printed notices, and communication to local media outlets (radio, television, print, and/or social).

Collection crews will consist of self-loading vehicles, dump trucks, dump trailers and/or heavy-duty pickups. All loads will be filled to capacity, whenever possible. All tracked vehicles will be prohibited on the roadways, unless equipped with rubber tracks.

Any overhanging debris will be removed and/or trimmed at the loading site. Tarping will be used as required by any Federal, State and Local regulations.

Temporary Debris Staging and Reduction Site (TDSRS) Preparation, Maintenance and Reclamation:

TDSRS's will be selected by the County, the DMC and TTS at the beginning of the season. Upon activation of the contract, following a disaster event, TTS will work with both the County and the DMC to evaluate which sites should be activated. TTS will be responsible for preparing, maintaining, and operating the TDSRS throughout the contract. Once the TDSRS is selected, TTS will provide a Site Management Plan. As requested, the plan will be drawn to a scale of 1" = 50' and will address the following functions:

- Access to site.
- Site preparation – clearing, erosion control, and grading.
- Traffic control procedures.
- Safety.
- Segregation of debris.
- Location of ash disposal area, hazardous material containment area, contractor work area, and inspection tower.
- Location of incineration operations, grinding operation (if required). Burning operations will be given a 100-foot clearance from any stockpile and a 1000-foot clearance from any structures.
- Location of existing structures or sensitive areas requiring protection.
- Restoration of site.



Terry Tree Service, LLC

755 Jefferson Rd, Suite 200
Rochester, NY 14623-1907
Phone (585) 436-2900 • Fax (585) 783-1209
www.terrytree.com

Disaster Debris Removal and Disposal Services

Franklin County, Florida

Preparation:

The steps that will be taken to prepare the TDSRS are as follows:

- Video of the site will be taken prior to any construction beginning.
- Sampling of soil and groundwater.
- If needed, erosion controls and Storm Water Pollution Prevention Plan (SWPPP).
- Clearing and grading may be required.
- Overhead power transmission lines present a hazard and require consideration due to large dump body trucks and trailers used to haul debris. There may also be underground utilities which need to be identified due to the potential for site disturbance by truck and equipment traffic and possible site grading. Due diligence and 811 Dig Safe call outs and reaching out to electric utility companies is everyday business at TTS.
- TTS will build an inspection tower at each of the TDSRS's in compliance with OSHA standards for temporary inspection towers. The tower will be suitable for at least three (3) inspectors for inspection of all incoming and exiting loads.
- TTS will prepare and ensure that all roads are suitable for debris hauling. It will be the responsibility of TTS to provide any rock for any roads that require stabilization for ingress or egress.
- Security measures will be implemented to prevent unauthorized access to facilities and illegal dumping when not supervised. We will block driveways and entrances with equipment until gates can be installed.
- Signs listing the site operating hours will be posted. Operating hours are only allowed during visible daylight hours, unless otherwise authorized by the County.
- Should any permitting be required, TTS will be responsible for acquiring and the County will be responsible for covering the associated costs.

Maintenance:

Throughout the operation of the TDSRS, it will be the sole responsibility of TTS to ensure proper maintenance and upkeep. Maintenance will include:

- Upkeep of access roads.
- Upkeep of Inspection Towers.
- Additional erosion controls, clearing and grading as needed.

Reclamation:

The goal of TDSRS Reclamation is to return the site to the property owner in as similar condition as possible to when the site was acquired. Reclamation efforts will include:

- Inspection tower removal.
- Removal of burned material/ash, and/or chips.
- Any soil deemed unsuitable will be removed.



Terry Tree Service, LLC

755 Jefferson Rd, Suite 200
Rochester, NY 14623-1907
Phone (585) 436-2900 • Fax (585) 783-1209
www.terrytree.com

Disaster Debris Removal and Disposal Services

Franklin County, Florida

- Removal of temporary roads.
- Soil and groundwater sampling.
- Returning site to proper grade, by utilizing fill.
- Applying grass seed.

TTS will adhere to all Federal, State and Local laws, standards, and regulations while reclaiming the TDSRS.

Debris Processing and Disposal:

Processing of debris can vary widely based on several factors, including but not limited to, type of debris, Federal, State, and Local guidelines/restrictions, and County preferences. Given the magnitude of the event, and the volume of the debris collected it can either be hauled directly to its final disposal site, or to a Temporary Debris Staging and Reduction Site (TDSRS). At the TDSRS the debris will be segregated based on type and processed according Federal, State, and Local guidelines, as well as on County preferences.

Typically, Vegetative Debris will either be chipped/ground or burned. Chipping/Grinding is an effective way to prepare material so it may be reused, as well as reducing the volume to limit how much space will be utilized at its final disposal location. When chipping/grinding is the best option for the County, the following minimum standards will be applied:

- Verify with County local known floodplains or flood prone areas to avoid.
- Storage areas on site should be a minimum of 100-feet away from water sources (lakes, streams, rivers, and/or wetlands).
- Storage areas for incoming debris and processed material shall be at least 250-feet from the site property boundaries and 500-feet from on-site buildings and structures. Management of processed material shall be in accordance with guidelines for reducing the 'spontaneous combustion potential' in compost and mulch piles.
- Storage areas for incoming debris shall be located at least 500-feet from residential dwellings, commercial or public structures, potable water supply wells, and septic tanks with leach fields.
- After debris is chipped/ground it will be hauled to the designated landfill and/or final disposal location. TTS will be responsible for paying all landfill tipping fees and provide documentation to the Debris Monitoring Contractor DMC to receive eligible reimbursement from FEMA and FHWA.

Burning is another effective option to reduce debris, often achieving a 95% reduction. There is however much to consider prior establishing a burning site.

- Type of burn method – uncontrolled open-air, controlled open-air, air curtain pit, and portable air curtain. The type of burn method will be selected by the County, DMC and TTS.
- All burning methods must be approved by the Florida Department of Environmental Protection and a permit must be obtained. TTS will obtain the permit for the County, and the County will cover the cost.
- Incineration Boxes will be located at least 100-feet from any stockpiles, and 1000-feet from any structures.



Terry Tree Service, LLC

755 Jefferson Rd, Suite 200
Rochester, NY 14623-1907
Phone (585) 436-2900 • Fax (585) 783-1209
www.terrytree.com

Disaster Debris Removal and Disposal Services

Franklin County, Florida

- All burning will be done in accordance with all Federal, State and Local regulations.
- TTS will include a Burn Specific Safety Plan as part of the Site Management Plan if the burning method is chosen.

Recycling of debris will occur whenever possible, and in accordance with all Federal, State, and Local standards, and regulations. Depending on the type of debris, various recycling methods will be applied.

Working with the Disaster Debris Monitoring Contractor (DMC):

TTS will work closely with the DMC in the following:

- Monitoring multiple contractors and multiple trucks delivery materials to the TDSRS.
- Verify that each truck that delivers to the TDSRS matches its manifest ticket – truck and maximum capacity.
- Make sure load is properly secured for transport.
- Photograph of each loaded truck bed and attach photograph to truck's manifest ticket or link with digital photographic records, as applicable.
- Review trucks manifest and observe the truck bed to confirm that the truck was loaded to capacity or as described on manifest ticket, and completely empty on departure.
- Maintain manifest tickets in an organized manner for proper record review and storage.
- Initial load tickets before permitting truck to leave the TDSRS check-in area to empty its load.
- Document location of origin of debris.
- Troubleshoot questions and problems at the TDSRS and identify issues that could impact eligibility for cost reimbursements.
- Remain in contact with the central office/staging operation command center.
- Perform other duties as directed by the County's personnel, e.g., conduct final inspections and issue closeout reports.

Documentation and Records:

Proper documentation and record keeping is paramount to ensuring that maximum reimbursement is achieved for the County. TTS will work closely with DMC Officials, and County Leadership throughout this process. TTS will make available storm debris for inspection by the County and/or the DMC, to ensure that it is being handled in compliance with all Federal, State, and Local standards and regulations.

The County will always have access to all work sites and disposal areas. TTS and the DMC will have in place at the TDSRS, personnel to verify and maintain records regarding the contents and cubic yards of the vehicles entering and leaving the TDSRS. The DMC will coordinate data collection and information management, including but not limited to:

- Detailed estimates in a Project Worksheet to be submitted to the Florida Division of Emergency Management (FDEM), Federal Highway Administration (FHWA), and Federal Emergency Management Agency (FEMA).



Terry Tree Service, LLC

755 Jefferson Rd, Suite 200
Rochester, NY 14623-1907
Phone (585) 436-2900 • Fax (585) 783-1209
www.terrytree.com

Disaster Debris Removal and Disposal Services

Franklin County, Florida

- Implement and maintain a disaster debris management system linking load ticket and TDSRS information, including reconciliation and photographic documentation processes.
- Provide daily, weekly, or other periodic reports for County's leadership and the DMC, noting work progress and efficiency, current/revised estimates, project completion and other schedule forecasts/updates.

TTS will provide the DMC with all requested information that is necessary from proper documentation. The County will receive all documentation prior to submittal. TTS will work closely with the FDEM, FEMA and all other applicable Federal, State and Local agencies to ensure that eligible debris collection and data documenting appropriately address concerns of the likely reimbursement agencies. The DMC will be responsible for coordinating this work. If there are any discrepancies in what is required of TTS, TTS will immediately bring them to the attention of the DMC Team.

In addition to debris removal, TTS will provide the following assistance as it pertains to documentation:

- Recovery process documentation – A recovery process documentation plan
- Maintain documentation of recovery process
- Written and oral reports will be provided to the DMC as requested
- Review documentation for accuracy and quantity.
- Assist in preparation of claim documentation.

Prior to the beginning of each Hurricane Season, TTS will meet with the County and the DMC to finalize and test the processes for inspection and documentation that are to be used during the response and recovery phase. This will be an annual meeting.

Safety:

At TTS, "Our safety record is no accident." We make safety of the County residents and staff, our employees, and sub-contractors our top priority. A dedicated safety officer is assigned to every Disaster Removal and Disposal Contract that TTS enters. This officer is familiar with and trained to the standards of the Florida Department of Transportation Maintenance of Traffic Standards (FDOTMOT). All work zones will conform with all FDOTMOT, and all work sites/conditions will conform to all applicable Federal, State, and Local standards. TTS will ensure that all sub-contractors have received appropriate training.



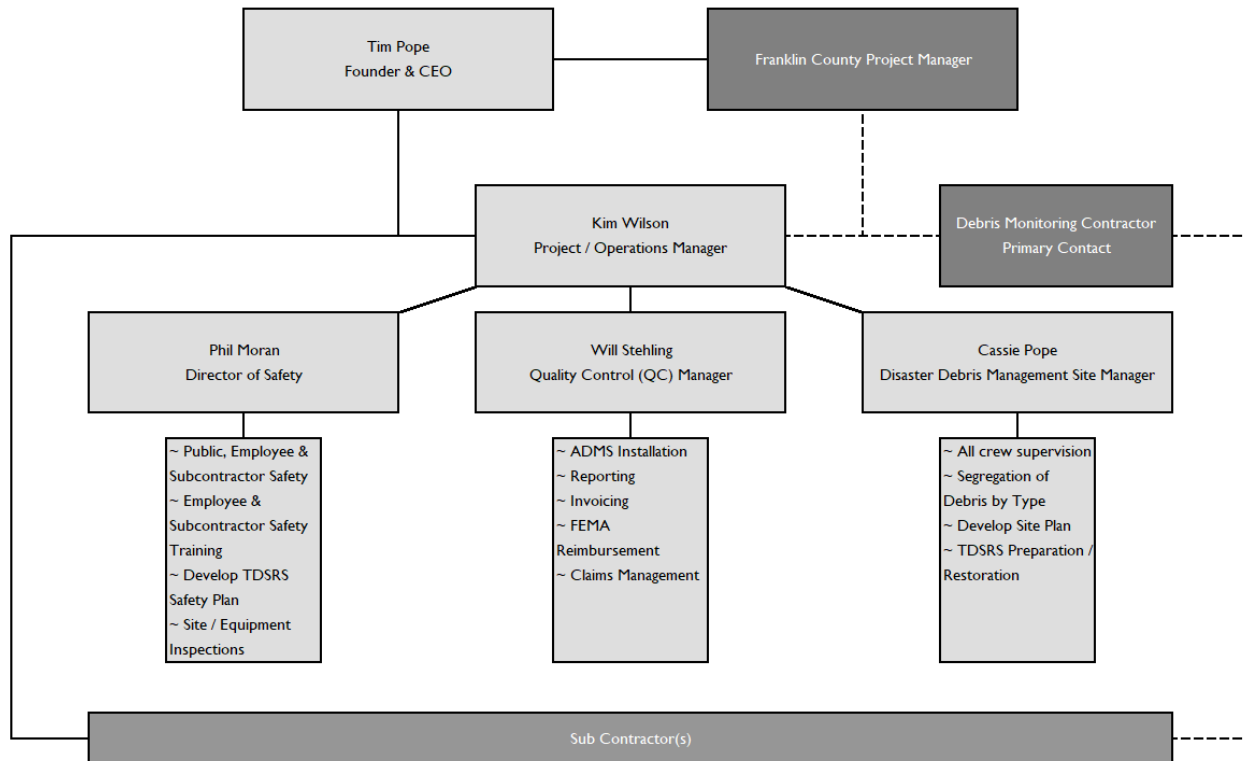
Terry Tree Service, LLC

755 Jefferson Rd, Suite 200
Rochester, NY 14623-1907
Phone (585) 436-2900 • Fax (585) 783-1209
www.terrytree.com

Disaster Debris Removal and Disposal Services

Franklin County, Florida

Organizational Chart – Key People





Terry Tree Service, LLC

755 Jefferson Rd, Suite 200
Rochester, NY 14623-1907
Phone (585) 436-2900 • Fax (585) 783-1209
www.terrytree.com

Disaster Debris Removal and Disposal Services

Franklin County, Florida

Timothy J. Pope

Chief Executive Officer

tpope@terrytree.com

(585)235-1125

Core Competencies / Primary Roles

- Managing Business Operations for a \$40 Million Organization Encompassing Two Companies
- Negotiating Multi-Million Dollar Contracts with Government, Utilities & Private Entities
- Managing Multi-Million Dollar Civil Construction, Land Clearing and Disaster Recovery Projects
- Collaborating with Utilities, Municipal Governments, State Agencies and the US Army Corps of Engineers
- Directing Company's Compliance with FAR and VAR Regulations
- Providing Executive Leadership to the Senior Management Team
- Directing Day-to-Day Activities of 300 Employees
- Early Career Experience Operating Heavy Equipment and Field Supervision

Relevant Project Experience

Hurricane Irma – Highlands County, FL (2017)
Hurricane Matthew – Myrtle Beach, SC (2016)
California Wildfire Relief Project (2015 – 2016)
Van Zandt County, TX Cleanup (2015)
West Palm Beach, FL Debris Cleanup (2015)
Barnwell County, SC Debris Cleanup (2014)
Hurricane Sandy – New York, NY (2012)
Hurricane Irene – New York, NY (2011)

Hurricane Irene – Norfolk, VA (2011)
EF5 Tornadoes – Tuscaloosa, AL (2011)
EF5 Tornadoes – Joplin, MO (2011)
Kentucky Ice Storm (2009)
Ice Storm – Oklahoma City, OK (2007)
Snowstorm Clearing – Buffalo, NY (2006)
Hurricane Katrina – Zones A & B (2005)
Hurricane Fran (1996)

Employment History

2003 – Present	Ironwood Heavy Highway, LLC – Rochester, NY	Founder & CEO
1995 – Present	Terry Tree Service, LLC – Rochester, NY	Founder & CEO
2006 – 2015	Eagle Veteran Construction Services, LLC – Rochester, NY	Founder & COO
1989 – 1995	Lewis Tree Service – Rochester, NY	Manager

Education & Certifications

State University of New York at Canton – Canton, NY
Member of Association of General Contractors (AGC)
Voting Member American National Standards (ANSI) Z133 Committee on Arboricultural Safety Operations
OSHA 10-Hour Construction Safety & Health Certified
First Aid and CPR Certified



Terry Tree Service, LLC

755 Jefferson Rd, Suite 200
Rochester, NY 14623-1907
Phone (585) 436-2900 • Fax (585) 783-1209
www.terrytree.com

Disaster Debris Removal and Disposal Services

Franklin County, Florida

Kim Wilson

Project / Operations Manager

kwilson@terrytree.com

(931)703-2139

Core Competencies / Primary Roles

- Coordinates and Manages Disaster Recovery Contracts
- Evaluates and Addresses Time-Critical Disaster Relief Needs, Including Debris Cleanup
- Solicits and Evaluates Subcontractor Contributions for Robust Disaster Recovery Support
- Directs up to 400-Person Recovery Crews Across Multiple States

Relevant Project Experience

Hurricane Irma – Highlands County, FL (2017)
Hurricane Matthew – Myrtle Beach, SC (2016)
California Wildfire Relief Project (2015 – 2016)
Van Zandt County, TX Cleanup (2015)
West Palm Beach, FL Debris Cleanup (2015)
Barnwell County, SC Debris Cleanup (2014)
Hurricane Sandy – New York, NY (2012)
Hurricane Irene – New York, NY (2011)

Hurricane Irene – Norfolk, VA (2011)
EF5 Tornadoes – Tuscaloosa, AL (2011)
EF5 Tornadoes – Joplin, MO (2011)
Kentucky Ice Storm (2009)
Ice Storm – Oklahoma City, OK (2007)
Snowstorm Clearing – Buffalo, NY (2006)
Hurricane Katrina – Zones A & B (2005)

Employment History

2005 – Present	Terry Tree Service, LLC – Rochester, NY	Project Manager / Operations Manager
2005 - 2019	Terry Tree Service South, LLC – Rochester, NY	Project Manager / Operations Manager
2008 – 2011	Phillips & Jordan, Inc. – Knoxville, TN	Project Manager / Operations Manager

Education & Certifications

FEMA Emergency Management Institute
National Response Framework, an Introduction (IS-800.C)
An Introduction to the National Incident Management System (IS-700.B)
Introduction to Debris Operations (IS-632.A)
Basic Incident Command System for Initial Response (IS-200.C)
Introduction to Incident Command Systems (IS-100.C)
FEMA 325 Guide and Safety Training
OSHA 40-Hour Hazardous Waste Operations and Emergency Response Standard (HAZWOPER) Certified
OSHA 30-Hour Safety and Health Certified
First Aid and CPR Certified
Electrical Hazards Awareness Program (EHAP) Certified

**Terry Tree Service, LLC**

755 Jefferson Rd, Suite 200
Rochester, NY 14623-1907
Phone (585) 436-2900 • Fax (585) 783-1209
www.terrytree.com

Disaster Debris Removal and Disposal Services**Franklin County, Florida**

Will Stehling

Quality Control Manager

wstehling@terrytree.com

(585)314-6106

Core Competencies / Primary Roles

- Coordinates and Manages Disaster Recovery Contracts
- Evaluates and Addresses Time-Critical Disaster Relief Needs, Including Debris Cleanup
- Solicits and Evaluates Subcontractor Contributions for Robust Disaster Recovery Support
- Directs up to 400-Person Recovery Crews Across Multiple States

Relevant Project Experience

Hurricane Irma – Highlands County, FL (2017)
California Wildfire Relief Project (2015 – 2016)
Barnwell County, SC Debris Cleanup (2014)
Hurricane Sandy – New York, NY (2012)
Hurricane Irene – Norfolk, VA (2011)

EF5 TORNADOS – Tuscaloosa, AL (2011)
Kentucky Ice Storm (2009)
Hurricane Gustav – Louisiana (2007)
Ice Storm – Oklahoma City, OK (2007)
Hurricane Katrina – Zones A & B (2005)

Employment History

2005 – Present	Terry Tree Service, LLC – Rochester, NY	Project Manager / Operations Manager
2005 - 2019	Terry Tree Service South, LLC – Rochester, NY	Project Manager / Operations Manager
1986 – 1992	United States Air Force	Aviation Technician

Education & Certifications

FEMA Emergency Management Institute
National Response Framework, an Introduction (IS-800.C)
An Introduction to the National Incident Management System (IS-700.B)
Basic Incident Command System for Initial Response (IS-200.C)
Introduction to Incident Command Systems (IS-100.C)
OSHA 10-Hour Construction Safety & Health Certified
First Aid and CPR Certified
Electrical Hazards Awareness Program (EHAP) Certified



Terry Tree Service, LLC

755 Jefferson Rd, Suite 200
Rochester, NY 14623-1907
Phone (585) 436-2900 • Fax (585) 783-1209
www.terrytree.com

Disaster Debris Removal and Disposal Services

Franklin County, Florida

Philip Moran

Director of Safety

pmoran@terrytree.com

(585)236-7902

Core Competencies / Primary Roles

- Observe and Document Crew Safety Compliance in accordance with Terry Tree and Customer Requirements
- Observation and Assessment of Site-Specific Hazards
- Ensures OSHA, DEC, and Customer Compliance
- Trainer and Instructor for Heavy Equipment Operations
- Incident Investigation and Review
- Manages Crew of 5 Superintendents

Relevant Project Experience

Hurricane Irma – Highlands County, FL (2017)

Buffalo Super Snowstorm – Buffalo, NY (2014)

Ice Storm – Lockport, NY (2012)

Snowstorm – Plattsburgh, NY (2012)

Field Safety Supervisor for all Substation Projects
(2013 – 2020)

Employment History

2021 – Present	Ironwood Heavy Highway, LLC & Terry Tree Service, LLC – Rochester, NY	Director of Safety
2012 - 2020	Ironwood Heavy Highway, LLC & Terry Tree Service, LLC – Rochester, NY	Field Safety Superintendent
2011 – 2012	Ironwood Heavy Highway, LLC – Rochester, NY	Crew Foreman
2010 – 2011	Liberty Underground, Inc. – Rochester, NY	Founder & COO
2007 – 2010	Kircher Construction, Inc. – Rochester, NY	Crew Foreman

Education & Certifications

Monroe Community College – Rochester, NY

OSHA 10-Hour Construction Safety & Health Certified

OSHA 30-Hour Safety and Health Certified

OSHA 500 – Trainer Course in Occupational Safety and Health Standards for the Construction Industry
Certified

NYS DEC Endorsed 4-Hour Erosion & Sediment Control

TICA Electrical Hazards Awareness Program (EHAP) Certified

ACRT Line Clearance Arborist Certified

First Aid and CPR Certified



Terry Tree Service, LLC

755 Jefferson Rd, Suite 200
Rochester, NY 14623-1907
Phone (585) 436-2900 • Fax (585) 783-1209
www.terrytree.com

Disaster Debris Removal and Disposal Services

Franklin County, Florida

Cassie Pope

Disaster Debris Management Site Manager

cpope@terrytree.com

(585)746-2814

Core Competencies / Primary Roles

- Designing and Implementing Project Schedules
- Project Quality Assurance / Quality Control and Documentation
- Cost Recording and Documentation, Invoicing Preparation
- Supervising Field Crew and Ensuring Deadlines are Met

Relevant Project Experience

NYS DOT Emergency Debris Removal Contract –
Flooding Disaster – Lodi, NY (2018)

RARP Station 255 – Rochester, NY (2018 – 2020)

Oswego Substation – Oswego, NY (2017 – 2019)

Copenhagen Switch Yard – Copenhagen, NY (2015
– 2016)

GRTA Station 122 – Fairport, NY (2016 – 2018)

Employment History

2015 – Present Terry Tree Service, LLC – Rochester, NY Project Manager

Education & Certifications

St. John Fisher College – Rochester, NY

Bachelor of Science in Business Management

OSHA 40-Hour Hazardous Waste Operations and Emergency Response Standard (HAZWOPER) Certified

OSHA 30-Hour Safety and Health Certified

OSHA 10-Hour Construction Safety and Health Certified

NUCA Confined Space Certified

NYS DEC Endorsed 4-Hour Erosion & Sediment Control

First Aid and CPR Certified

Electrical Hazards Awareness Program (EHAP) Certified

**Terry Tree Service, LLC**

755 Jefferson Rd, Suite 200
Rochester, NY 14623-1907
Phone (585) 436-2900 • Fax (585) 783-1209
www.terrytree.com

Disaster Debris Removal and Disposal Services**Franklin County, Florida**

List of Equipment

<u>Equipment Type</u>	<u>Quantity</u>
Assorted Attachments	258
ATV's / UTV's	16
Backhoes	12
Bucket Trucks	66
Chippers	44
Chip Trucks	12
Dozers	24
Dump Trucks	30+
Excavators	46
Farm Tractors	3
Grinder	6
Hydro Seeder	1
Loader	48
Loader Trucks	60+
Log Skidder	4
Pickups	80
Mowers	8
Rollers	3
Rollback	3
Skid Steer	23
Small Misc.	57
Service Trucks	20
Track Chipper	4
Track Dumps	14
Track Lifts	16
Straw Blowers	3
Vac Truck	12
Tigercat Feller Buncher	6
Trailers	59



Terry Tree Service, LLC

755 Jefferson Rd, Suite 200
Rochester, NY 14623-1907
Phone (585) 436-2900 • Fax (585) 783-1209
www.terrytree.com

Disaster Debris Removal and Disposal Services

Franklin County, Florida

[THIS PAGE IS INTENTIONALLY LEFT BLANK]



Terry Tree Service, LLC

755 Jefferson Rd, Suite 200
Rochester, NY 14623-1907
Phone (585) 436-2900 • Fax (585) 783-1209
www.terrytree.com

Disaster Debris Removal and Disposal Services

Franklin County, Florida

TAB F: LICENSES

[THE REMAINDER OF THIS PAGE IS INTENTIONALLY LEFT BLANK]



Terry Tree Service, LLC

755 Jefferson Rd, Suite 200
Rochester, NY 14623-1907
Phone (585) 436-2900 • Fax (585) 783-1209
www.terrytree.com

Disaster Debris Removal and Disposal Services

Franklin County, Florida

Individual Licenses / Certifications:

Tim Pope – CEO:

- OSHA 10
- First Aid / CPR

Kim Wilson – Project Manager:

- FEMA ICS 100, 200, 632, 700 & 800 training certificates
- 40 Hour Hazwooper
- OSHA 30
- First Aid / CPR
- Electrical Hazard Awareness Program

Will Stehling – Quality Control Manager:

- FEMA ICS 100, 200, 325, 700 and 800 training certificates
- OSHA 10
- First Aid/CPR
- Electrical Hazard Awareness Program

Phil Moran – Safety Director:

- OSHA 30
- OSHA 10
- OSHA 500 Trainer Safety Certification
- Construction EHAP Trainer / Instructor
- Utility Line Clearance Certified
- First Aid – CPR Certified Instructor (American Red Cross)
- NYS DEC Erosion & Sediment Control Certified
- Specialized Equipment Operator Certified



Terry Tree Service, LLC

755 Jefferson Rd, Suite 200
Rochester, NY 14623-1907
Phone (585) 436-2900 • Fax (585) 783-1209
www.terrytree.com

Disaster Debris Removal and Disposal Services

Franklin County, Florida

TAB G: INSURANCES

[THE REMAINDER OF THIS PAGE IS INTENTIONALLY LEFT BLANK]



Terry Tree Service, LLC

755 Jefferson Rd, Suite 200
Rochester, NY 14623-1907
Phone (585) 436-2900 • Fax (585) 783-1209
www.terrytree.com

Disaster Debris Removal and Disposal Services

Franklin County, Florida



CERTIFICATE OF LIABILITY INSURANCE

DATE (MM/DD/YYYY)
10/28/2020

THIS CERTIFICATE IS ISSUED AS A MATTER OF INFORMATION ONLY AND CONFERS NO RIGHTS UPON THE CERTIFICATE HOLDER. THIS CERTIFICATE DOES NOT AFFIRMATIVELY OR NEGATIVELY AMEND, EXTEND OR ALTER THE COVERAGE AFFORDED BY THE POLICIES BELOW. THIS CERTIFICATE OF INSURANCE DOES NOT CONSTITUTE A CONTRACT BETWEEN THE ISSUING INSURER(S), AUTHORIZED REPRESENTATIVE OR PRODUCER, AND THE CERTIFICATE HOLDER.

IMPORTANT: If the certificate holder is an ADDITIONAL INSURED, the policy(ies) must have ADDITIONAL INSURED provisions or be endorsed. If SUBROGATION is WAIVED, subject to the terms and conditions of the policy, certain policies may require an endorsement. A statement on this certificate does not confer rights to the certificate holder in lieu of such endorsement(s).

PRODUCER M & T Insurance Agency, Inc. 285 Delaware Avenue, Ste 4000 Buffalo NY 14202		CONTACT NAME: Commercial Lines PHONE (A/C, No, Ext): FAX (A/C, No): 855-595-4605 E-MAIL ADDRESS: CLServicing@mtb.com															
INSURED Terry Tree Service LLC 755 Jefferson Road, Suite 200 Rochester, NY 14623		INSURER(S) AFFORDING COVERAGE <table border="1"> <tr> <th>INSURER</th> <th>NAIC #</th> </tr> <tr> <td>INSURER A : Zurich American Ins Co</td> <td>16535</td> </tr> <tr> <td>INSURER B : AGCS Marine Insurance</td> <td>22837</td> </tr> <tr> <td>INSURER C : Ace American Ins. Company</td> <td>22667</td> </tr> <tr> <td>INSURER D : American-Zurich Ins Co</td> <td>40142</td> </tr> <tr> <td>INSURER E : Accident Fund Ins Co of America</td> <td></td> </tr> <tr> <td>INSURER F :</td> <td></td> </tr> </table>		INSURER	NAIC #	INSURER A : Zurich American Ins Co	16535	INSURER B : AGCS Marine Insurance	22837	INSURER C : Ace American Ins. Company	22667	INSURER D : American-Zurich Ins Co	40142	INSURER E : Accident Fund Ins Co of America		INSURER F :	
INSURER	NAIC #																
INSURER A : Zurich American Ins Co	16535																
INSURER B : AGCS Marine Insurance	22837																
INSURER C : Ace American Ins. Company	22667																
INSURER D : American-Zurich Ins Co	40142																
INSURER E : Accident Fund Ins Co of America																	
INSURER F :																	

COVERAGES **CERTIFICATE NUMBER:** 365647987 **REVISION NUMBER:**

THIS IS TO CERTIFY THAT THE POLICIES OF INSURANCE LISTED BELOW HAVE BEEN ISSUED TO THE INSURED NAMED ABOVE FOR THE POLICY PERIOD INDICATED. NOTWITHSTANDING ANY REQUIREMENT, TERM OR CONDITION OF ANY CONTRACT OR OTHER DOCUMENT WITH RESPECT TO WHICH THIS CERTIFICATE MAY BE ISSUED OR MAY PERTAIN, THE INSURANCE AFFORDED BY THE POLICIES DESCRIBED HEREIN IS SUBJECT TO ALL THE TERMS, EXCLUSIONS AND CONDITIONS OF SUCH POLICIES. LIMITS SHOWN MAY HAVE BEEN REDUCED BY PAID CLAIMS.

INSR LTR	TYPE OF INSURANCE	ADDL INSD	SUBR WVD	POLICY NUMBER	POLICY EFF (MM/DD/YYYY)	POLICY EXP (MM/DD/YYYY)	LIMITS
A	<input checked="" type="checkbox"/> COMMERCIAL GENERAL LIABILITY <input type="checkbox"/> CLAIMS-MADE <input checked="" type="checkbox"/> OCCUR 1,000 <input checked="" type="checkbox"/> XCU Coverage GEN'L AGGREGATE LIMIT APPLIES PER: POLICY <input checked="" type="checkbox"/> PRO-JECT <input type="checkbox"/> LOC <input checked="" type="checkbox"/> OTHER: Contractual Liab	Y	Y	GLO3035196	11/1/2020	11/1/2021	EACH OCCURRENCE \$ 1,000,000 DAMAGE TO RENTED PREMISES (Ea occurrence) \$ 100,000 MED EXP (Any one person) \$ 10,000 PERSONAL & ADV INJURY \$ 1,000,000 GENERAL AGGREGATE \$ 2,000,000 PRODUCTS - COMPOP AGG \$ 2,000,000
A	<input checked="" type="checkbox"/> AUTOMOBILE LIABILITY <input checked="" type="checkbox"/> ANY AUTO OWNED AUTOS ONLY <input type="checkbox"/> SCHEDULED AUTOS NON-OWNED AUTOS ONLY HIRED AUTOS ONLY	Y	Y	BAP3035196	11/1/2020	11/1/2021	COMBINED SINGLE LIMIT (Ea accident) \$ 1,000,000 BODILY INJURY (Per person) \$ BODILY INJURY (Per accident) \$ PROPERTY DAMAGE (Per accident) \$
C	<input checked="" type="checkbox"/> UMBRELLA LIAB <input checked="" type="checkbox"/> OCCUR EXCESS LIAB <input type="checkbox"/> CLAIMS-MADE DED <input checked="" type="checkbox"/> RETENTION \$ 10,000	Y	Y	N10879413 007	11/1/2020	11/1/2021	EACH OCCURRENCE \$ 5,000,000 AGGREGATE \$ 5,000,000
D	WORKERS COMPENSATION AND EMPLOYERS' LIABILITY ANY PROPRIETOR/PARTNER/EXECUTIVE OFFICER/MEMBER EXCLUDED? (Mandatory in NH) If yes, describe under DESCRIPTION OF OPERATIONS below	Y/N	N/A	WC3035194	11/1/2020	11/1/2021	<input checked="" type="checkbox"/> PER STATUTE <input type="checkbox"/> OTHER E.L. EACH ACCIDENT \$ 1,000,000 E.L. DISEASE - EA EMPLOYEE \$ 1,000,000 E.L. DISEASE - POLICY LIMIT \$ 1,000,000
B/E	Equip Floater Leased/Rented Equip Excess Liability	Y	Y	MZ193079142 GXL0000111 01	11/1/2019 11/1/2020	11/1/2020 11/1/2021	LIMITED EACH OCCURRENCE 750,000/2,500 AGGREGATE 5,000,000 5,000,000

DESCRIPTION OF OPERATIONS / LOCATIONS / VEHICLES (ACORD 101, Additional Remarks Schedule, may be attached if more space is required)
forms applicable if required by written contract:
General Liability Form (Form CG 00 01 04 13)
General Liability Blanket Additional Insured with Completed Operations, Primary & Non-Contributory (Form U-GL-1175-F CW).
General Liability Blanket Waiver of Subrogation (Form U-GL-925-B CW)
General Liability Per Construction Project General Aggregate for other than Wrap Projects (Form CG 25 03 05 09)
Automobile Blanket Additional Insured, Primary and Non-contributory & Waiver of Subrogation (Form U-CA-424-G NY)
Equipment Floater - Blanket Loss Payee for Leased/Rented Equipment per executed written contract, agreement or permit (Form CE 4210 04 16)
Umbrella Follow Form (Form MAUB0001 01 15)
See Attached...

CERTIFICATE HOLDER SAMPLE CERTIFICATE	CANCELLATION SHOULD ANY OF THE ABOVE DESCRIBED POLICIES BE CANCELLED BEFORE THE EXPIRATION DATE THEREOF, NOTICE WILL BE DELIVERED IN ACCORDANCE WITH THE POLICY PROVISIONS. AUTHORIZED REPRESENTATIVE
---	--

ACORD 25 (2016/03)

The ACORD name and logo are registered marks of ACORD

© 1988-2015 ACORD CORPORATION. All rights reserved.

* Contract specific certificate will be provided upon contract award



Terry Tree Service, LLC

755 Jefferson Rd, Suite 200
Rochester, NY 14623-1907
Phone (585) 436-2900 • Fax (585) 783-1209
www.terrytree.com

Disaster Debris Removal and Disposal Services

Franklin County, Florida

TAB H: REQUIRED DOCUMENTS

[THE REMAINDER OF THIS PAGE IS INTENTIONALLY LEFT BLANK]



Terry Tree Service, LLC

755 Jefferson Rd, Suite 200
Rochester, NY 14623-1907
Phone (585) 438-2900 • Fax (585) 793-1209
www.terrytree.com

Disaster Debris Removal and Disposal Services

Franklin County, Florida

Proposal Submittal Checklist

Section 8 – Required Forms

PROPOSAL SUBMITTAL CHECKLIST

- ☒ Proposer's Certification
- ☒ Addendum Acknowledgement
- ☒ Drug-Free Workplace Certificate
- ☒ Sworn Statement Pursuant to Section 287.133 (3)(a) F.S. in Public Entity Crimes
- ☒ Affidavit of Non-Collusion
- ☒ Professional References
- ☒ MWBE Participation Statement
- ☒ Vendor Information
- ☒ W-9 Form
- ☒ Unit Cost Fee Rate Schedule

Submission of one (1) original marked "ORIGINAL", five (5) identical paper copies, and one (1) electronic copy in pdf format on CD.

BY: Terry Tree Service, LLC

Bidder

(Authorized Signature)

07/16/2021

(Date)

Timothy Pope, CEO

(Print Name)

This document must be completed and returned with your Submittal

DISASTER DEBRIS REMOVAL & DISPOSAL SERVICES RFP

35

**Terry Tree Service, LLC**

755 Jefferson Rd, Suite 200
 Rochester, NY 14623-1907
 Phone (585) 436-2900 • Fax (585) 783-1209
 www.terrytree.com

Disaster Debris Removal and Disposal Services**Franklin County, Florida****PROPOSER'S CERTIFICATION**

I have carefully examined the Request for Proposals, Instructions to Proposers, General and/or Special Conditions, Specifications, RFP Proposal, and any other documents accompanying or made a part of this invitation.

I hereby propose to furnish the goods or services specified in the Request for Proposal at the prices or rates as finally negotiated. I agree that my proposal will remain firm for a period of up to ninety (90) days to allow the Entity's adequate time to evaluate the proposal. Furthermore, I agree to abide by all conditions of the proposal.

I certify that all information contained in this RFP is truthful to the best of my knowledge and belief. I further certify that I am a duly authorized to submit this RFP on behalf of the Proposer / Contractor as its act and deed and that the Proposer / Contractor is ready, willing, and able to perform if awarded the contract.

I further certify that this RFP is made without prior understanding, Contract, connection, discussion, or collusion with any person, firm or corporation submitting a RFP for the same product or service; no officer, employee or agent of the Entity's Board of Entity's Commissioners or of any other proposer interested in said RFP; and that the undersigned executed this Proposer's Certification with full knowledge and understanding of the matters therein contained and was duly authorized to do so.

I further certify that having read and examined the specifications and documents for the designated services and understanding the general conditions for contract under which services will be performed, does hereby propose to furnish all labor, equipment, and material to provide the services set forth in the RFP.

I hereby declare that the following listing states any clarifications, all variations from and exceptions to the requirements of the specifications and documents. The undersigned further declares that the "work" will be performed in strict accordance with such requirements and understands that any exceptions to the requirements of the specifications and documents may render the proposal non-responsive.

NO EXCEPTIONS ALLOWED AFTER THE RFP IS SUBMITTED:

Please check one: ☒ I take NO exceptions. ☐ Exceptions:

<u>Terry Tree Service, LLC</u>	<u>755 Jefferson Road, Suite 200</u>
NAME OF BUSINESS	MAILING ADDRESS
<u>[Signature]</u>	<u>Rochester, NY 14623</u>
AUTHORIZED SIGNATURE	CITY, STATE & ZIP CODE
<u>Timothy Pope, CEO</u>	<u>(585) 235-1125</u>
NAME, TITLE, TYPED	TELEPHONE NUMBER / FAX NUMBER
<u>16-1488524</u>	<u>scoffman@terrytree.com</u>
FEDERAL IDENTIFICATION #	E-MAIL ADDRESS

STATE OF ~~FLORIDA~~ New York
 ENTITY'S OF Monroe

The foregoing instrument was acknowledged before me this 16 day of July, 2021 by Timothy Pope who is personally known to me or who has produced as identification and who did take an oath.

My Commission Expires:

January 12, 2022

[Signature]
 Notary Public

This document must be completed and returned with your Submittal

HEATHER L. KELLY
 Notary Public, State of New York
 No. 01KE6001171
 Qualified in Monroe County
 Commission Expires Jan. 12, 2022

DISASTER DEBRIS REMOVAL & DISPOSAL SERVICES RFP**36**



Terry Tree Service, LLC

755 Jefferson Rd, Suite 200
Rochester, NY 14623-1907
Phone (585) 436-2900 • Fax (585) 783-1209
www.terrytree.com

Disaster Debris Removal and Disposal Services

Franklin County, Florida

ADDENDUM ACKNOWLEDGEMENT

I have carefully examined this Request for Proposal (RFP) which includes scope, requirements for submission, general information and the evaluation and award process.

I acknowledge receipt and incorporation of the following addenda, and the cost, if any, of such revisions has been included in the price of the proposal.

Addendum # _____ Date: _____

Addendum # _____ Date: _____

Addendum # _____ Date: _____

Addendum # _____ Date: _____

(Authorized Signature)

07/16/2021

(Date)

Timothy Pope, CEO

(Print Name)

STATE OF ~~FLORIDA~~ New York
ENTITY'S OF Monroe

The foregoing instrument was acknowledged before me this 16 day of July, 2021 by Timothy J Pope, CEO, who is personally known to me or who has produced as identification and who did take an oath.

My Commission Expires:

January 12, 2022

Heather L. Kelly
Notary Public

Kennard
HEATHER L. KELLY
Notary Public, State of New York
No. 01KE6001171
Qualified in Monroe County
Commission Expires Jan. 12, 2022

This document must be completed and returned with your Submittal

DISASTER DEBRIS REMOVAL & DISPOSAL SERVICES RFP

37

**Terry Tree Service, LLC**

755 Jefferson Rd, Suite 200
 Rochester, NY 14623-1907
 Phone (585) 436-2900 • Fax (585) 783-1209
 www.terrytree.com

Disaster Debris Removal and Disposal Services**Franklin County, Florida****DRUG FREE WORKPLACE**

I, the undersigned, in accordance with Florida Statute 287.087, hereby certify that,
 (Print or type name of firm) Terry Tree Service, LLC

- Publishes a written statement notifying that the unlawful manufacture, distribution, dispensing, possession or use of a controlled substance is prohibited in the Workplace named above and specifying actions that will be taken against violations of such prohibition.
- Informs employees about the dangers of drug abuse in the workplace, the firm's policy of maintaining a drug free working environment, and available drug counseling, rehabilitation, and employee assistance programs, and the penalties that may be imposed upon employees for drug use violations.
- Gives each employee engaged in providing commodities or contractual services that are under bid or proposal, a copy of the statement specified above.
- Notifies the employees that as a condition of working on the commodities or contractual services that are under bid or proposal, the employee will abide by the terms of the statement and will notify the employer of any conviction of, please or guilty or nolo contendere to, any violation of Chapter 1893, or of any controlled substance law of the State of Florida or the United States, for a violation occurring in the workplace, no later than five (5) days after such conviction, and requires employees to sign copies of such written statement to acknowledge their receipt.
- Imposes a sanction on, or requires the satisfactory participation in, a drug abuse assistance or rehabilitation program, if such is available in the employee's community, by any employee who is so convicted.
- Makes a good faith effort to continue to maintain a drug free workplace through the implementation of the Drug Free Workplace program.
- "As a person authorized to sign this statement, I certify that the above-named business, firm or corporation complies fully with the requirements set forth herein".

 (Authorized Signature)

07/16/2021

 (Date)

Timothy Pope, CEO
 (Print Name)

STATE OF FLORIDA New York
 ENTITY'S OF Monroe

The foregoing instrument was acknowledged before me this 16 day of July, 2021 by Timothy Pope, CEO who is personally known to me or who has produced as identification and who did take an oath.

My Commission Expires: January 12, 2022

Heather L. Kennedy
 Notary Public

HEATHER L. ~~KELLY~~ KENNEDY

Notary Public, State of New York
 No. 01KE6001171

Qualified in Monroe County
 Commission Expires Jan. 12, 2022

This document must be completed and returned with your Submittal

DISASTER DEBRIS REMOVAL & DISPOSAL SERVICES RFP**38**



Terry Tree Service, LLC

755 Jefferson Rd, Suite 200
Rochester, NY 14623-1907
Phone (585) 436-2900 • Fax (585) 785-1209
www.terrytree.com

Disaster Debris Removal and Disposal Services

Franklin County, Florida

SWORN STATEMENT UNDER SECTION 287.133(3)(A), FLORIDA STATUTES, ON PUBLIC ENTITY CRIMES

Before me, the undersigned Entity's, personally appeared Timothy Pope, who, being by me first duly sworn, made the following statement:

1. The business address of 755 Jefferson Road, Suite 200, Rochester, NY 14623 (name of Offeror or business) is Terry Tree Service, LLC.
2. My relationship to Terry Tree Service, LLC (name of Offeror or business) is CEO (relationship such as sole proprietor, partner, president, vice president).
3. I understand that a public entity crime as defined in Section 287.133 of the Florida Statutes includes a violation of any state or federal law by a person with respect to and directly related to the transaction of business with any public entity in Florida or with an agency or political subdivision of any other state or with the United States, including, but not limited to, any proposal or contract for goods or services to be provided to any public entity or such an agency or political subdivision and involving antitrust, fraud, theft, bribery, collusion, racketeering, conspiracy or material misrepresentation.
4. I understand that "convicted" or "conviction" is defined by the Florida Statutes to mean a finding of guilt or a conviction of a public entity crime, with or without an adjudication of guilt, in any federal or state trial court of record relating to charges brought by indictment or information after July 1, 1989, because of a jury verdict, non-jury trial, or entry of a plea of guilt or nolo contendere.
5. I understand that "affiliate" is defined by the Florida Statutes to mean (1) a predecessor or successor of a person or a corporation convicted of a public entity crime, or (2) an entity under the control of any natural person who is active in the management of the entity and who has been convicted of a public entity crime, or (3) those officers, directors, executives, partners, shareholders, employees, members, and agents who are active in the management of an affiliate, or (4) a person or corporation who knowingly entered into a joint venture with a person who has been convicted of a public entity crime in Florida during the preceding 36 months.
6. Neither the Offeror or Contractor, nor any officer, director, executive, partner, shareholder, employee, member, or agent who is active in the management of the Offeror or Contractor, nor any affiliate of the Offeror or Contractor has been convicted of a public entity crime subsequent to July 1, 1989. (Draw a line through paragraph 6 if paragraph 7 below applies.)
7. There has been a conviction of a public entity crime by the Offeror or Contractor, or an officer, director, executive, partner, shareholder, employee, member or agent of the Offeror or Contractor who is active in the management of the Offeror or Contractor or an affiliate of the Offeror or Contractor. A determination has been made pursuant to Section 287.133(3) by order of the Division of Administrative Hearings that it is not in the public interest for the name of the convicted person or affiliate to appear on the convicted vendor list. The name of the convicted person or affiliate is _____. A copy of the order of the Division of Administrative Hearings is attached to this statement. (Draw a line through paragraph 7 if paragraph 6 above applies.)

(Authorized Signature)

Timothy Pope, CEO

(Print Name)

07/18/2021

(Date)

STATE OF FLORIDA New York

ENTITY'S OF Monroe

DISASTER DEBRIS REMOVAL & DISPOSAL SERVICES RFP

39

Sworn to before me this 16th day of July 2021 by Timothy J Pope, CEO

Kennard
HEATHER L. KELLY
Notary Public, State of New York
No. 01KE6001171
Qualified in Monroe County
Commission Expires Jan 12, 2022



Terry Tree Service, LLC

755 Jefferson Rd, Suite 200
Rochester, NY 14623-1907
Phone (585) 436-2900 • Fax (585) 783-1209
www.terrytree.com

Disaster Debris Removal and Disposal Services

Franklin County, Florida

The foregoing instrument was acknowledged before me this 12 day of July, 2021 by Timothy Pope, CEO who is personally known to me or who has produced as identification and who did take an oath.

My Commission Expires:

January 12, 2022

Heather L. Keppard
Notary Public

Keppard
HEATHER L. KEPPARD
Notary Public, State of New York
No. 01KE6001171
Qualified in Monroe County
Commission Expires Jan. 12, 2022

This document must be completed and returned with your Submittal

DISASTER DEBRIS REMOVAL & DISPOSAL SERVICES RFP

40



Terry Tree Service, LLC

755 Jefferson Rd, Suite 200
Rochester, NY 14623-1907
Phone (585) 436-2900 • Fax (585) 783-1209
www.terrytree.com

Disaster Debris Removal and Disposal Services

Franklin County, Florida

AFFIDAVIT OF NON-COLLUSION AND OF NON-INTEREST OF ENTITY'S EMPLOYEES

Timothy Pope * being first duly sworn, deposes and says that he (it) is the Offeror in the above proposal, that the only person or persons interested in said proposal are named therein; that no officer, employee or agent of the Entity's Board of Entity's Commissioners or of any other Offeror is interested in said proposal; and that affiant makes the above proposal with no past or present collusion with any other person, firm or corporation.

(Authorized Signature)

07/16/2021
(Date)

Timothy Pope, CEO
(Print Name)

STATE OF FLORIDA New York
ENTITY'S OF Monroe

The foregoing instrument was acknowledged before me this 16 day of July, 2021 by Timothy Pope, CEO, who is personally known to me or who has produced as identification and who did take an oath.

My Commission Expires:

January 12, 2022

Kennard
HEATHER L. ~~Kenny~~
Notary Public, State of New York
No. 01KE6001171
Qualified in Monroe County
Commission Expires Jan 12, 2022

Heather L. Kennard
Notary Public

*NOTICE: State name of Offeror followed by name of authorized individual (and title) that is signing as Affiant.
If Offeror is an individual, state name of Offeror only.

This document must be completed and returned with your Submittal

DISASTER DEBRIS REMOVAL & DISPOSAL SERVICES RFP

41



Terry Tree Service, LLC

755 Jefferson Rd, Suite 200
Rochester, NY 14623-1907
Phone (585) 436-2900 • Fax (585) 783-1209
www.terrytree.com

Disaster Debris Removal and Disposal Services

Franklin County, Florida

PROFESSIONAL REFERENCES

Please provide three (3) current and correct references from clients for similar services.

1. Company Name: Highlands County, Florida
Contact Person: Clinton Howerton, Jr.
City, State: Sebring, Florida
Telephone Number: (863) 402-6548
Email Address: chowerton@hcbcc.org
Description of goods or services provided: Disaster Debris Removal & Disposal
Contract Amount: \$8,675,320
Start/End Date of Contract: 2017

2. Company Name: Horry County Solid Waste Authority, Inc
Contact Person: Mike Bessant
City, State: Conway, South Carolina
Telephone Number: (843) 347-1651
Email Address: mbessant@solidwasteauthority.org
Description of goods or services provided: Disaster Debris Removal & Disposal
Contract Amount: _____
Start/End Date of Contract: 2018 - Present

3. Company Name: Lovin Contracting Company, Inc
Contact Person: Mitch Beasley
City, State: Robbinsville, North Carolina
Telephone Number: (828) 479-9462
Email Address: mitchb@lovincontracting.com
Description of goods or services provided: Disaster Debris Removal & Disposal
Contract Amount: Various
Start/End Date of Contract: Various

This document must be completed and returned with your Submittal

DISASTER DEBRIS REMOVAL & DISPOSAL SERVICES RFP

42



Terry Tree Service, LLC

755 Jefferson Rd, Suite 200
Rochester, NY 14623-1907
Phone (585) 436-2900 • Fax (585) 783-1209
www.terrytree.com

Disaster Debris Removal and Disposal Services

Franklin County, Florida

VENDOR INFORMATION

(Please attach a current W9 Form)

Name of Individual or Business Name:

Terry Tree Service, LLC

Parent Company Name (if different than above):

Taxpayer Identification Number (TIN): 16-1488524

Vendor is:

() Corporation

() Partnership

() Sole Proprietorship

(☒) Other LLC (Explain)

Permanent Residence/Corporate Office Address:

Address 755 Jefferson Rd, Suite 200

City Rochester

State NY

Zip Code 14623

Phone (585) 235-1125

Fax (585) 783-1209

E-mail scoffman@terrytree.com

Payment Address (if different from above):

Address

City

State

Zip Code

Phone

Fax

E-mail

Purchase Order Address (if different from above):

Address

City

State

Zip Code

Phone

Fax

E-mail

This document must be completed and returned with your Submittal

DISASTER DEBRIS REMOVAL & DISPOSAL SERVICES RFP

44



Terry Tree Service, LLC

755 Jefferson Rd, Suite 200
Rochester, NY 14623-1907
Phone (585) 436-2900 • Fax (585) 783-1209
www.terrytree.com

Disaster Debris Removal and Disposal Services

Franklin County, Florida

Form W-9
(Rev. October 2018)
Department of the Treasury
Internal Revenue Service

Request for Taxpayer Identification Number and Certification

► Go to www.irs.gov/FormW9 for instructions and the latest information.

Give Form to the requester. Do not send to the IRS.

1 Name (as shown on your income tax return). Name is required on this line; do not leave this line blank.
Terry Tree Service, LLC

2 Business name/disregarded entity name, if different from above

3 Check appropriate box for federal tax classification of the person whose name is entered on line 1. Check only **one** of the following seven boxes.

☐ Individual/sole proprietor or single-member LLC

☐ C Corporation

☐ S Corporation

☐ Partnership

☐ Trust/estate

☒ Limited liability company. Enter the tax classification (C=C corporation, S=S corporation, P=Partnership) ► **P**

Note: Check the appropriate box in the line above for the tax classification of the single-member owner. Do not check LLC if the LLC is classified as a single-member LLC that is disregarded from the owner unless the owner of the LLC is another LLC that is not disregarded from the owner for U.S. federal tax purposes. Otherwise, a single-member LLC that is disregarded from the owner should check the appropriate box for the tax classification of its owner.

☐ Other (see instructions) ►

4 Exemptions (codes apply only to certain entities, not individuals; see instructions on page 3):

Exempt payee code (if any) _____

Exemption from FATCA reporting code (if any) _____

(Applies to accounts maintained outside the U.S.)

5 Address (number, street, and apt. or suite no.) See instructions.
755 Jefferson Road, Suite 200

6 City, state, and ZIP code
Rochester, New York 14623

7 List account number(s) here (optional)

Part I Taxpayer Identification Number (TIN)

Enter your TIN in the appropriate box. The TIN provided must match the name given on line 1 to avoid backup withholding. For individuals, this is generally your social security number (SSN). However, for a resident alien, sole proprietor, or disregarded entity, see the instructions for Part I, later. For other entities, it is your employer identification number (EIN). If you do not have a number, see *How to get a TIN*, later.

Note: If the account is in more than one name, see the instructions for line 1. Also see *What Name and Number To Give the Requester* for guidelines on whose number to enter.

Social security number

____ - ____ - ____

or

Employer identification number

1 6 - 1 4 8 8 5 2 4

Part II Certification

Under penalties of perjury, I certify that:

1. The number shown on this form is my correct taxpayer identification number (or I am waiting for a number to be issued to me); and

2. I am not subject to backup withholding because: (a) I am exempt from backup withholding, or (b) I have not been notified by the Internal Revenue Service (IRS) that I am subject to backup withholding as a result of a failure to report all interest or dividends, or (c) the IRS has notified me that I am no longer subject to backup withholding; and

3. I am a U.S. citizen or other U.S. person (defined below); and

4. The FATCA code(s) entered on this form (if any) indicating that I am exempt from FATCA reporting is correct.

Certification instructions. You must cross out item 2 above if you have been notified by the IRS that you are currently subject to backup withholding because you have failed to report all interest and dividends on your tax return. For real estate transactions, item 2 does not apply. For mortgage interest paid, acquisition or abandonment of secured property, cancellation of debt, contributions to an individual retirement arrangement (IRA), and generally, payments other than interest and dividends, you are not required to sign the certification, but you must provide your correct TIN. See the instructions for Part II, later.

Sign Here Signature of U.S. person ► Uthman Date ► 6/10/2019

General Instructions

Section references are to the Internal Revenue Code unless otherwise noted.

Future developments. For the latest information about developments related to Form W-9 and its instructions, such as legislation enacted after they were published, go to www.irs.gov/FormW9.

Purpose of Form

An individual or entity (Form W-9 requester) who is required to file an information return with the IRS must obtain your correct taxpayer identification number (TIN) which may be your social security number (SSN), individual taxpayer identification number (ITIN), adoption taxpayer identification number (ATIN), or employer identification number (EIN), to report on an information return the amount paid to you, or other amount reportable on an information return. Examples of information returns include, but are not limited to, the following:

- Form 1099-DIV (dividends, including those from stocks or mutual funds)
- Form 1099-MISC (various types of income, prizes, awards, or gross proceeds)
- Form 1099-B (stock or mutual fund sales and certain other transactions by brokers)
- Form 1099-S (proceeds from real estate transactions)
- Form 1099-K (merchant card and third party network transactions)
- Form 1098 (home mortgage interest), 1098-E (student loan interest), 1098-T (tuition)
- Form 1099-C (canceled debt)
- Form 1099-A (acquisition or abandonment of secured property)

Use Form W-9 only if you are a U.S. person (including a resident alien), to provide your correct TIN.

If you do not return Form W-9 to the requester with a TIN, you might be subject to backup withholding. See *What is backup withholding*, later.



Terry Tree Service, LLC

755 Jefferson Rd, Suite 200
Rochester, NY 14623-1907
Phone (585) 436-2900 • Fax (585) 783-1209
www.terrytree.com

Disaster Debris Removal and Disposal Services

Franklin County, Florida

Unit Cost Fee Rate Schedule

DESCRIPTION OF SERVICE	UNIT	UNIT COST
MOBILIZATION AND DEMOBILIZATION	L.S.	\$500,000

DESCRIPTION OF SERVICE	UNIT	UNIT COST
EMERGENCY ROAD CLEARING AND REMOVAL OF DEBRIS FROM THE PUBLIC RIGHT-OF-WAY		
Backhoe - Rubber Tire Type, J.D. 310 or equal w/bucket & hoe	Hour	\$45.00
Bucket Truck - 50 Ft.	Hour	\$35.00
Bucket Truck - 50' to 75'	Hour	\$40.00
Chipper w/2-man Crew	Hour	\$105.00
Crane - 100 Ton (8 Hr. Minimum)	Hour	\$167.00
Crane - 50 Ton	Hour	\$160.00
Crane 30 Ton or larger	Hour	\$150.00
Dozer -D-6 or equivalent	Hour	\$65.00
Dozer-CAT D4 or equivalent	Hour	\$60.00
Dozer-Cat D8 or equivalent	Hour	\$125.00
Dump Truck - 5 CY	Hour	\$45.00
Dump Truck - Trailer, 50-80 cubic yard	Hour	\$100.00
Dump Truck-Tandem, 14-18 cubic yard	Hour	\$55.00
Dump Truck-Trailer, 24-40 CY	Hour	\$75.00
Dump Truck-Trailer, 41-60 CY	Hour	\$85.00
Dump Trailer w/Tractor, 30 to 40 CY	Hour	\$75.00
Dump Trailer w/Tractor, 41 to 50 CY	Hour	\$85.00
Dump Trailer w/Tractor, 51 to 60 CY	Hour	\$100.00
Dump Truck - 10 to 15 CY	Hour	\$50.00
Walking Floor Trailer w/Tractor, 100CY	Hour	\$75.00
Equipment Transports	Hour	\$85.00
Excavator - Cat 320 or equivalent	Hour	\$100.00
Excavator - Cat 325 or equivalent	Hour	\$110.00
Excavator - Cat 330 or equivalent	Hour	\$125.00
Excavator - Rubber Tired with debris grapple	Hour	\$120.00

This document in its entirety must be completed and returned with your Submittal



Terry Tree Service, LLC

755 Jefferson Rd, Suite 200
Rochester, NY 14623-1907
Phone (585) 436-2900 • Fax (585) 783-1209
www.terrytree.com

Disaster Debris Removal and Disposal Services

Franklin County, Florida

Unit Cost Fee Rate Schedule (Page 2 of 7)

DESCRIPTION OF SERVICE	UNIT	UNIT COST
EMERGENCY ROAD CLEARING AND REMOVAL OF DEBRIS FROM THE PUBLIC RIGHT-OF-WAY (CONTINUED)		
Farm Tractor w/Box blade	Hour	\$50.00
Feller Bunchers 611 Hydro-Ax or equivalent	Hour	\$90.00
Forklift - Extends Boom with debris grapple	Hour	\$67.50
Jetter Vac Truck	Hour	\$125.00
Loader - Bobcat, 753 or John Deere 648-E with debris grapple or equivalent	Hour	\$95.00
Loader - Front End, 544 or equal with debris grapple or equivalent	Hour	\$80.00
Loader - Knuckle boom -216 Prentice or equivalent	Hour	\$140.00
Loader - Self, Knuckle Boom Truck, 25-35 CY Body	Hour	\$125.00
Loader - Self, Knuckle Boom Truck, 35-45 CY Body	Hour	\$135.00
Loader - Skid Steer-753 Bobcat w/Bucket or equivalent	Hour	\$65.00
Loader - Steer-753 Bobcat Skid with Street Sweeper or equivalent	Hour	\$65.00
Loader - Towed w/Tractor, Prentice 210 or equivalent	Hour	\$100.00
Loader - Wheel JD 644, or equivalent, with debris grapple or equivalent	Hour	\$85.00
Loader - Wheel, Cat 955 or equivalent	Hour	\$85.00
Loader - Wheel, Cat 966 or equivalent	Hour	\$125.00
Loader - Wheel, JD 644, 2-3 CY Articulated w/Bucket or equivalent	Hour	\$85.00
Log skidder-JD 648E, or equivalent	Hour	\$85.00
Motor Grader-CAT 125 - 140HP or equivalent	Hour	\$150.00
Pickup Truck - Unmanned	Hour	\$20.00
Portable Light Plant	Hour	\$20.00
Power Screen	Hour	\$300.00
Loader-Self, Scraper CAT 623 or equivalent	Hour	\$200.00
Stacking Conveyor	Hour	\$50.00
Stump Grinder/ Vermeer 252 or equivalent	Hour	\$50.00
Street Sweeper	Hour	\$45.00
Sweeper – open air broom	Hour	\$45.00
Track hoe 690 J.D. or equivalent	Hour	\$200.00

DISASTER DEBRIS REMOVAL & DISPOSAL SERVICES RFP

47



Terry Tree Service, LLC

755 Jefferson Rd, Suite 200
Rochester, NY 14623-1907
Phone (585) 436-2900 • Fax (585) 783-1209
www.terrytree.com

Disaster Debris Removal and Disposal Services

Franklin County, Florida

Unit Cost Fee Rate Schedule (Page 3 of 7)

DESCRIPTION OF SERVICE	UNIT	UNIT COST
EMERGENCY ROAD CLEARING AND REMOVAL OF DEBRIS FROM THE PUBLIC RIGHT-OF-WAY (CONTINUED)		
Truck - 1 ton Pickup	Day	\$450.00
Truck - 1/2-ton Pickup	Day	\$3000.00
Truck - 3/4-ton Pickup	Day	\$350.00
Truck - 6 Wheel Drive Heavy Off Roads	Hour	\$100.00
Truck - Box	Day	\$450.00
Truck - Service	Hour	\$75.00
Truck - Supplies	Hour	\$50.00
Truck - Water	Hour	\$75.00
Utility Van	Day	\$500.00
Other (List)		
Other (List)		
Other (List)		

DISASTER DEBRIS REMOVAL & DISPOSAL SERVICES RFP

48



Terry Tree Service, LLC

755 Jefferson Rd, Suite 200
Rochester, NY 14623-1907
Phone (585) 436-2900 • Fax (585) 783-1209
www.terrytree.com

Disaster Debris Removal and Disposal Services

Franklin County, Florida

Unit Cost Fee Rate Schedule (Page 4 of 7)

DESCRIPTION OF SERVICE	UNIT	UNIT COST
DEBRIS REMOVAL SERVICES		
Debris Removal from Event Site and Hauling to DMS 0-30 Miles.	CY	\$12.00
Debris Removal from Event Site and Hauling to Landfill or Final Disposal Site* 0-30 Miles.	CY	\$12.00
Debris Removal from DMS and Hauling to Landfill or Final Disposal Site* 0-30 Miles.	CY	\$8.00
Debris Removal from Event Site and Hauling to DMS 31-60 Miles.	CY	\$14.00
Debris Removal from Event Site and Hauling to Landfill or Final Disposal Site* 31-60 Miles.	CY	\$14.00
Debris Removal from DMS and Hauling to Landfill or Final Disposal Site* 31-60 Miles.	CY	\$10.00
Debris Removal from Event Site and Hauling to DMS 61+ Miles.	CY	\$16.00
Debris Removal from Event Site and Hauling to Landfill or Final Disposal Site* 61+ Miles.	CY	\$16.00
Debris Removal from DMS and Hauling to Landfill or Final Disposal Site* 61+ Miles.	CY	\$12.00
White Goods removal, segregation, and disposal at approved location*	Item	\$50.00
HAZWASTE removal, segregation, and packaging at DMS for disposal by others	Pound	\$40.00
Freon Management, Recycling and Disposal*	Per unit	\$120
Carcass Removal, Transportation and Disposal*	Pound	
(Removal of debris that will decompose such as animals or organic)		\$1.25
Waterway Debris Removal <i>Debris removal from canals, rivers, creeks, streams & ditches</i>	CY	\$270
Sand Collection and Screening <i>Pick up, screen and return debris laden sand/mud/dirt/rock</i>	CY	\$9.60
Vessel Removal	Unit	\$2,000.00
Demolition of Private Structure	CY	\$17.50
Vehicle Removal	Unit	\$75.00
Electronic Waste <i>Removal of electronic debris that contain hazardous materials, such as cathode ray tubes. Includes computer monitors and televisions</i>	Unit	\$54.00
Biowaste <i>Removal of waste capable of causing infection to humans (Animal waste, human blood, pathological waste)</i>	Pound	\$500.00

*NOTE: Contractor will pay tipping fee or other disposal fee at final disposal site(s) and charge the Entity at cost. All final disposal sites must be approved by Entity.

DISASTER DEBRIS REMOVAL & DISPOSAL SERVICES RFP

49



Terry Tree Service, LLC

755 Jefferson Rd, Suite 200
Rochester, NY 14623-1907
Phone (585) 436-2900 • Fax (585) 783-1209
www.terrytree.com

Disaster Debris Removal and Disposal Services

Franklin County, Florida

Unit Cost Fee Rate Schedule (Page 5 of 7)

DESCRIPTION OF SERVICE	UNIT	UNIT COST
TREE OPERATIONS, INCLUDING HAULING		
Hazardous Trees Removal 6" diameter to 12" diameter	Tree	\$30.00
Hazardous Trees Removal >12" diameter to 24" diameter	Tree	\$96.00
Hazardous Trees Removal >24" diameter to 36" diameter	Tree	\$180.00
Hazardous Trees Removal >36" to 48"	Tree	\$400.00
Hazardous Trees Removal >48" +	Tree	\$1,200.00
Hazardous Limbs Removal >2"	Tree	\$40.00
Hazardous Stumps Removal >24" – 36"	Stump	\$200.00
Hazardous Stumps Removal >36" – 48"	Stump	\$400.00
Hazardous Stumps >48" +	Stump	\$600.00
Stump Fill Dirt <i>Fill dirt for stump holes after removal</i>	CY	\$150.00

DESCRIPTION OF SERVICE	UNIT	UNIT COST
MANAGEMENT AND REDUCTION		
Grinding <i>Grinding/chipping vegetative debris</i>	CY	\$2.00
Air Curtain Burning <i>Air Curtain Burning vegetative debris</i>	CY	\$2.00
Open Burning <i>Opening burning vegetative debris</i>	CY	\$1.30
Compacting <i>Compacting vegetative debris</i>	CY	\$2.00
Debris Management Site Management <i>Preparation, management, and segregating at debris management site</i>	CY	\$1.75

Tipping Fees at Franklin County Landfill

Vegetation \$45.00/TON

All Other Debris \$65.00/TON

DISASTER DEBRIS REMOVAL & DISPOSAL SERVICES RFP

50



Terry Tree Service, LLC

755 Jefferson Rd, Suite 200
Rochester, NY 14623-1907
Phone (585) 436-2900 • Fax (585) 783-1209
www.terrytree.com

Disaster Debris Removal and Disposal Services

Franklin County, Florida

Unit Cost Fee Rate Schedule (Page 6 of 7)		
DESCRIPTION OF SERVICE	UNIT	UNIT COST
FINAL DISPOSAL		
Tipping Fees (Vegetative) <i>Fee includes negotiated contract price or pass-through amount for vegetative</i>	CY	\$13.00
Tipping Fees (Mix) <i>Fee includes negotiated contract price or pass-through amount for mix</i>	CY	\$13.00
Tipping Fees (C&D) <i>Fee includes negotiated contract price or pass-through amount for C&D</i>	CY	\$13.00

DESCRIPTION OF SERVICE	UNIT	UNIT COST
MISCELLANEOUS EQUIPMENT & SERVICES		
Hay bales	Each	\$8.00
Staked Silt Fence	LF	\$6.00
Fill Dirt	CY	\$5.00
Tree Protection, as required	LF	\$10.00
Dewater, as required	Hour	\$100.00
Bagged Ice, 50/100 lbs.	per	\$80
Bottled Water, Palletized Truck Load	Lb.	\$0.25
Bulk Water, Tanker	Gal	\$1.00
Water Tanker for Bulk Water, Tanker	Gal	\$1.00
Light Tower w/Generator	Day	\$225.00
Office Trailer, 40 ft	Day	\$300.00
Portable Toilet, Single	Day	\$50.00
Portable Toilet, Single	Week	\$225.00

DISASTER DEBRIS REMOVAL & DISPOSAL SERVICES RFP

51



Terry Tree Service, LLC

755 Jefferson Rd, Suite 200
Rochester, NY 14623-1907
Phone (585) 436-2900 • Fax (585) 783-1209
www.terrytree.com

Disaster Debris Removal and Disposal Services

Franklin County, Florida

Unit Cost Fee Rate Schedule (Page 7 of 7)		
DESCRIPTION OF SERVICE	UNIT	UNIT COST
PERSONNEL RATES		
Traffic Control Personnel	Hour	\$65.00
Laborer	Hour	\$65.00
Survey Person w/Truck	Hour	\$125.00
Inspector w/Vehicle	Hour	\$85.00
Chainsaw w/Operator	Hour	\$45.00
Foreman w/Truck	Hour	\$55.00
Superintendent w/Truck	Hour	\$65.00
Climber w/Gear	Hour	\$55.00
Mechanic w/Truck and Tools	Hour	\$75.00
Ticket Writers / Individual	Hour	\$45.00
Clerical / Individual	Hour	\$50.00
Program Management Services – Professional	Hour	\$95.00
Program Management Services – Administrative	Hour	\$95.00
Other (List) – Truck Driver	Hour	\$55.00
Other (List) – Equipment Operator	Hour	\$55.00
Other (List)	Hour	

*** Performance Bond

Each

Pass Through

DISASTER DEBRIS REMOVAL & DISPOSAL SERVICES RFP

52